



BEING SCENE 2014

WORKMAN ARTS PRESENTS

BEING SCENE

14TH ANNUAL JURIED EXHIBITION



PRODUCED BY:



This exhibition is made possible with the support of:

PARTNER:



GOVERNMENT FUNDER:



PRINT SPONSOR:



VENUE SPONSOR:



COVER IMAGE: Fabian Mosquera, *Mickey Mouse Recessitation*, 2014



Welcome to the 14th annual Being Scene exhibition.

I found I could say things with color and shapes that I couldn't say any other way - things I had no words for - Georgia O'Keeffe

Georgia O'Keeffe expresses the essence of why the visual arts are so important at Workman Arts. When Workman Arts began forming in the late 80's, artists began presenting their works salon style on the walls of the old Workman Theatre on Queen Street. The art quickly began to multiply and in 1998, Being Scene was born with work populating the newly amalgamated CAMH in the hallways of the Queen, Russell and College Street sites.

Today, it seems as if everything has changed and nothing has changed. What hasn't changed is the extraordinary artistry of our members that inspired the inaugural Being Scene. What has changed are the opportunities and recognition that our artists are now receiving not only in our growing community but also in the broader cultural establishment in Toronto and abroad. This change is due in no small part to the staff and jurors who have devoted their time and expertise over the years, to our generous funders and patrons, to the Gladstone Hotel who has graciously donated prime real estate and to our wonderful Board and volunteers who have worked behind the scenes to make it as memorable as possible.

This year, former Visual Arts Manager, Chris Mitchell took over the position of Managing Director. Over the past five years Chris developed exciting opportunities for the visual artists and built new programs such as the popular Revelations artist talks and the online art rental and sales. We are happy to welcome Leila Timmins into the role of Visual Arts Manager. She worked alongside three adjudicators: Erin Stump, Lisa Walter and cheyanne turions to put on this phenomenal show. Congratulations to all of you.

To the Being Scene artists both past and present and on behalf of everyone who has ever born witness to you, your art and your soul, thank you. You have done it again!

Sincerely,

Lisa Brown
Executive Artistic Director

LETTER FROM FOUNDER AND ARTISTIC / EXECUTIVE DIRECTOR OF WORKMAN ARTS



Expression takes its richest form through art.

And if art is a near universal form of expression, then Being Scene 2014 is a conversation rich in depth and subject matter.

The artists of Workman Arts represented in Being Scene 2014 use different mediums to present their own worlds – worlds that include lived experiences of mental illness as well as hope and resilience. Their talent is extraordinary and what they have to say is moving, enlightening and thought-provoking. I hope it will invite inclusive discussions about mental health, and I invite you to ponder the thoughtful conversations the works inspire for you.

CAMH is proud to support Workman Arts and the work of these artists. Congratulations to the fantastic artists in this show – their works are truly inspiring and I am sure they will spark many rich conversations.

Catherine Zahn, MD, FRCP (C)
President and CEO
Centre for Addiction and Mental Health



As Board Chair, I would like to welcome you to the 14th Being Scene art exhibition, one of the great events that Workman Arts has to offer.

Eight years ago I was invited by a well-known Toronto artist to attend my first Being Scene art exhibition at the Centre for Addiction and Mental Health at the Queen St. Site. The quality and breadth of the works in the show turned out to be a revelation. These works could easily have been hanging in any contemporary art gallery on Queen Street and they wouldn't have appeared out of place.

This year's art exhibition offers an inspiring mix of innovative and talented artists. As always, this exhibition reflects strong and fascinating submissions from local artists struggling with mental illnesses and addiction issues.

On behalf of the board of directors, congratulations to all the artists, the jurors and staff for once again giving us an outstanding and exciting exhibition.

Daniel Cushing
Chair, Board of Directors
Workman Arts



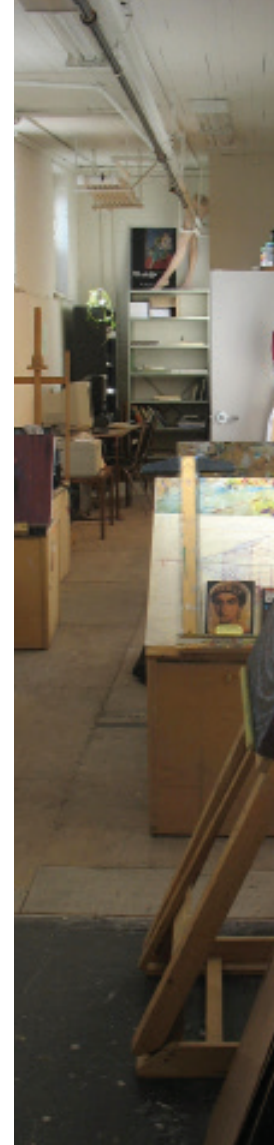
Coordinating the 14th annual Being Scene exhibition was the best welcome to the Workman Arts community that I could have hoped for. As the new Visual Arts Manager, it was fantastic to be greeted by artists each day dropping off work and to be able to experience first hand the energy, immense talent and thoughtfulness that holds this community together.

It was also a great pleasure working with our 2014 jurors cheyanne turions, Erin Stump and Lisa Walters. With over 270 submitted works spanning from cyanotype to digital collage, pencil crayon to oils, assemblage to sculpture and everything in between, adjudicating the exhibition is no small feat. The jurors carefully picked work not only for the technical proficiency, but also for their narrative capacity and emotional resonance. Together the jurors curated a show in which the works and intricacies of these narratives can speak together to challenge the ways we think about mental health and addiction.

Thank you to our jurors and to our partner the Gladstone Hotel for continuing to support our programming. Congratulations to the forty-one participating artists and thank you for creating such exceptional and engaging works. I am proud to be part of this community.

Sincerely,

Leila Timmins
Visual Arts Manager
Workman Arts



Workman Arts offers dedicated working studio space for member artists. The studio provides our community of visual artists with much needed physical space for creating as well as professional space for peer collaboration and mentoring. The studio is managed by a Visual Artist in Residence with all artists contributing to the daily operations. Artists access the studio free of charge through short-term studio residencies. The Gord Love Studio space provides artists the opportunity to develop their portfolios, refine their work or focus on a specific body of work or project.

CHEYANNE TURIONS

From our varied perspectives—gallerist, artist, curator—the critical sensibilities of Erin Stump, Lisa Walter and myself coalesced around narrative. The works selected for this year's Being Scene were chosen for the resonances we observed when specific pieces shared proximity. There is a sense of intimacy amongst the works, an idea proposed and developed amongst each cluster, unfolding along the hallways and within the rooms of the Gladstone Hotel. There are motifs present (portraiture and conceptualism, for instance), and yet it is my hope that as viewers moves through the exhibition that they are able to sense the diversity of practices supported by Workman Arts. It was such a pleasure to be introduced to so many artists, and to think alongside Erin and Lisa, stalwart companions for sure. It is my hope that our enthusiasm is contagious! And finally, many thanks to the incredible staff at Workman Arts for making this happen. It's no small feat.

cheyanne turions is a writer and independent curator. She is the director of No Reading After the Internet (Toronto) and is a member of the co-creative team for the Art and Society theme within the Cities for People movement. She maintains a website dedicated to dialogue around curatorial practice at cheyanneturions.wordpress.com.

LISA WALTER

Choosing from among this year's submissions was a bit like trying to choose and shape a sports team from among a group of individual champions of different sports. Not only were the works under consideration artistically strong (as usual), they were iconoclastic and loudly proclaimed their creators' voices. The themes we distilled from these entries reflect the growth of Being Scene into something like a bellwether of the visual arts in Toronto. The show this year has its most prominent exhibition to date, and makes a fascinating family snapshot of many disparate characters herded into a room and told to smile for the camera. I've never been more proud to be part of Being Scene.

Lisa Walter is an artist, educator, and writer who lives and works in Toronto. A self-taught visual artist, she has exhibited her artwork professionally since 2010. Her work has been exhibited at Nuit Blanche, the AGO, Toronto Art Fashion Week and Rideau Hall. The Globe and Mail has described her work as "delicate and unsparing." Currently, Lisa is Artist in Residence at Workman Arts and is writing and illustrating a graphic memoir of her experiences with severe Obsessive-Compulsive Disorder, called Dinosaur.

ERIN STUMP

It was pleasure be asked to select the works for this years Being Scene exhibition. I was excited to see the large diversity of work, media and subject matter. Great conversations were had with other jury members about the artwork. We worked together to create curated grouping and select pieces that spoke to each other. I look forward to seeing the exhibition with all the artwork exhibited together. Congrats to all the artists who submitted and the dedicated artists at Workman Arts.

Erin Stump is the director of Erin Stump Projects, also known as ESP. She received her BFA from Nova Scotia College of Art and Design 2004 and attended Ecole Nationale Supérieure Des Beaux-Arts, Paris in 2002. She went on to co-run the NSCAD Student Art Store, a NSCAD commercial gallery, in Halifax (now called Seeds Gallery). In 2007 she started as a gallery assistant at Katharine Mulherin Contemporary Art Projects. Stump co-launched Board of Directors with Mulherin in 2008, a collaborative curatorial project, where Stump began presenting exhibitions. Stump opened her solo gallery ESP in April 2011, a commercial gallery where she focuses on exhibiting emerging contemporary Canadian artists now on Dundas Street.



08 CS *Anamnesis* 2014 acrylic on canvas 40" x 30" \$250.00



ANNETTE SEIP *What Happened?* 2014 c-print 20" x 24" \$300.00



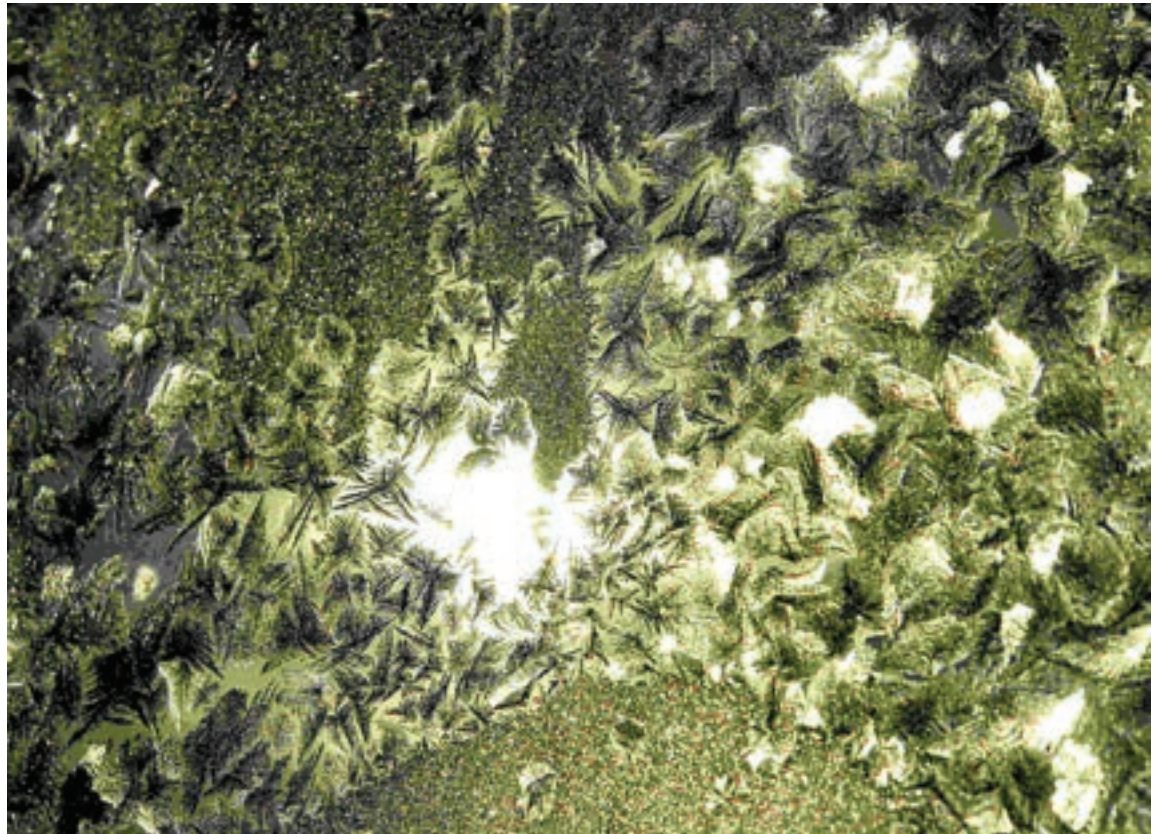
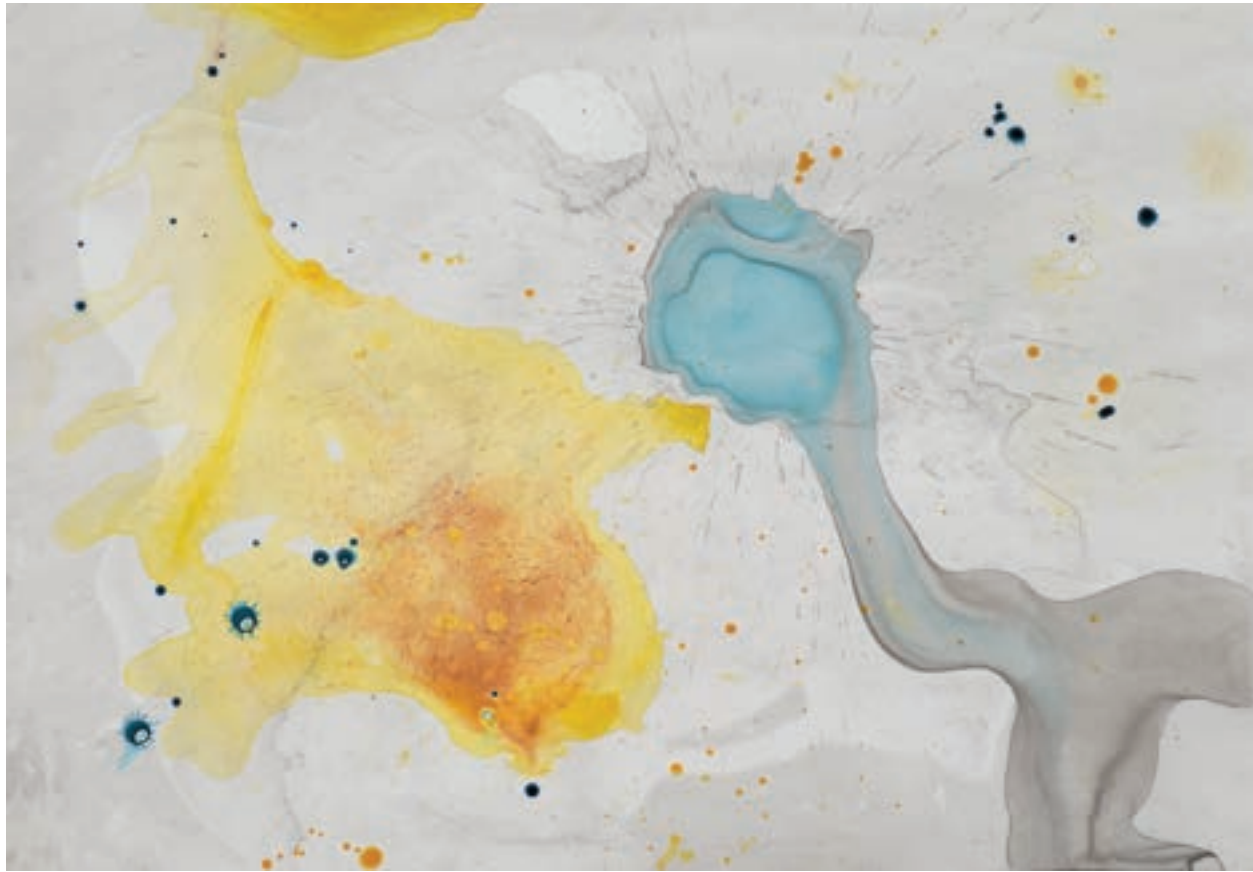
10

ANNETTE SEIP *Flesh & Blood* 2014 c-print 20" x 20" \$275.00



11

AMY E NES *Dalton* 2013 oil on canvas 16" X 12" \$150.00





14 SYLVIA FREY *Weeds* 2014 acrylic on canvas 14" X 18" \$250.00



HEATHER FULTON *...As Surely Water Finds Its Own Level* 2014 cyanotype 18" X 24" \$400.00







20 CARMELO MORRA *Valentino* 2014 acrylic on canvas 11" X 14" NFS



JACE TRAZ *Cubic Nude #1* 2005 acrylic on canvas 36" X 18" NFS





24 DARIUS SANEI *Can yYou Hear The Clock Ticking?* 2007 oil on canvas 36" X 48" \$2000.00



MONIKA SZOPINSKA *The Blues* 2014 c-print 16" X 20" \$250.00



BEING
SCENE

26

MARCO BUONOCORE *Untitled, Baracoa* 2010 2013 silver gelatin print 11" X 14" \$450.00

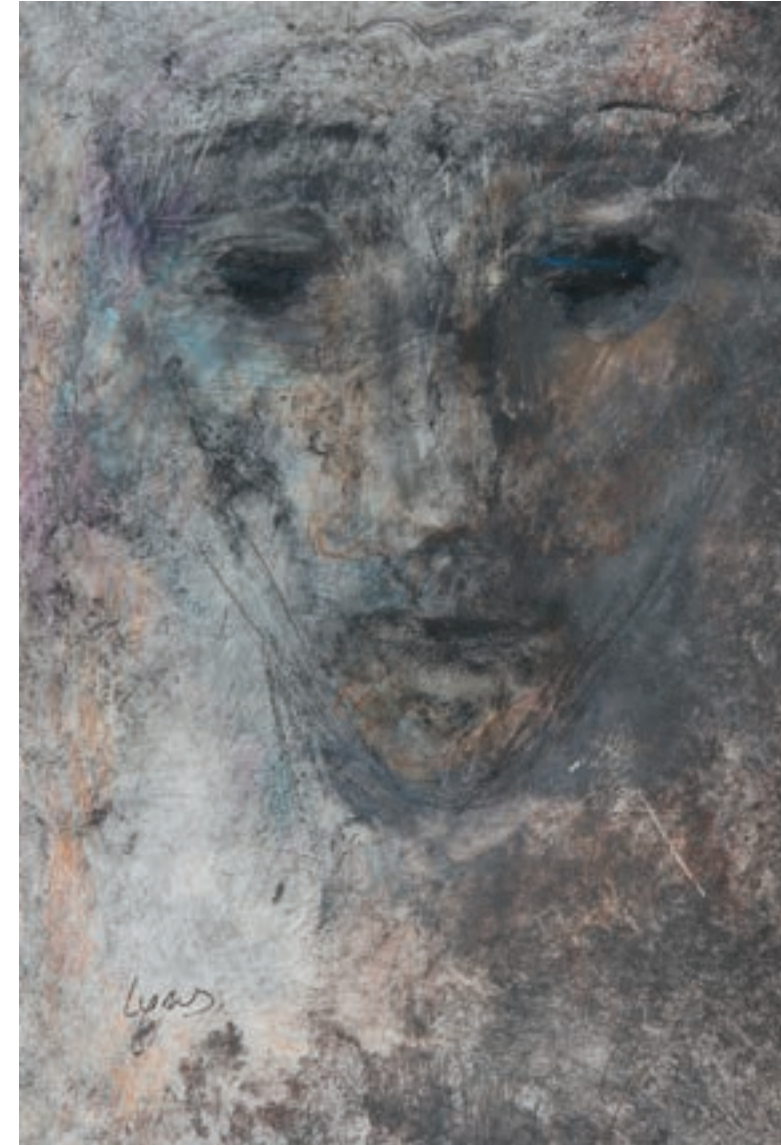


BEING
SCENE

27

SEAN PATENAUDE *Untitled* 2014 c-print 16" X 20" \$300.00







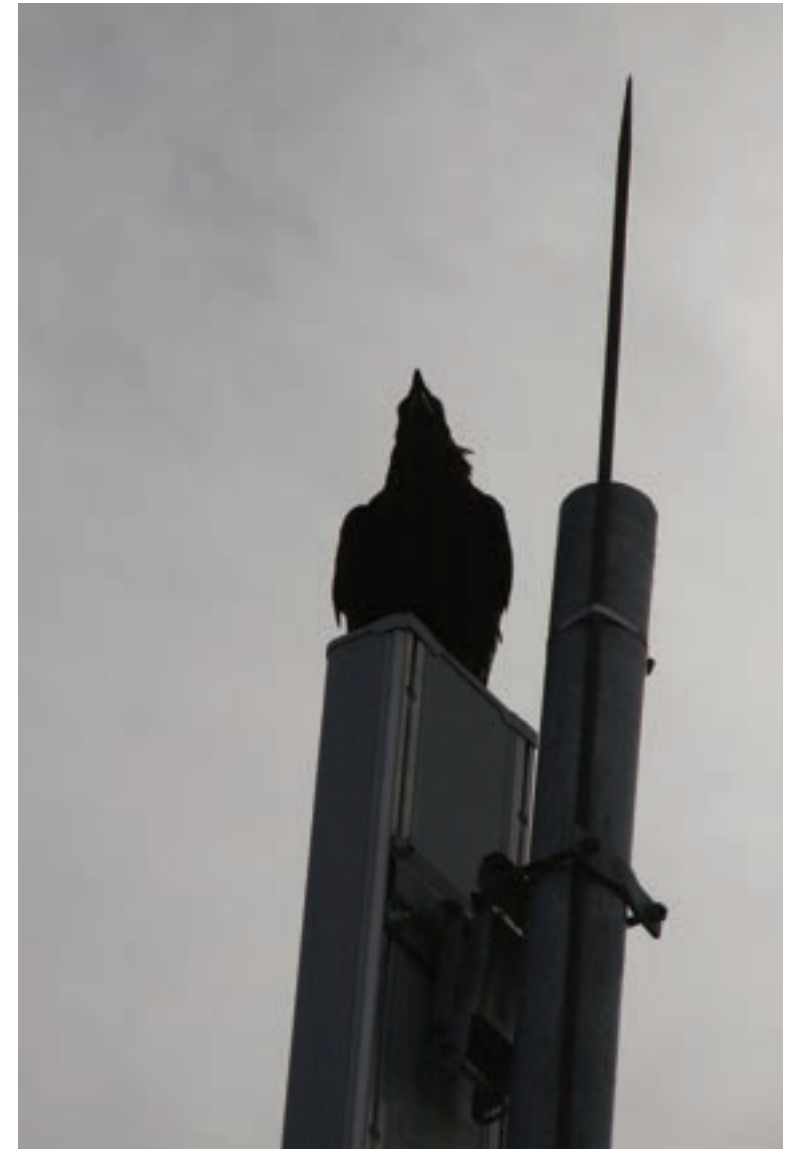
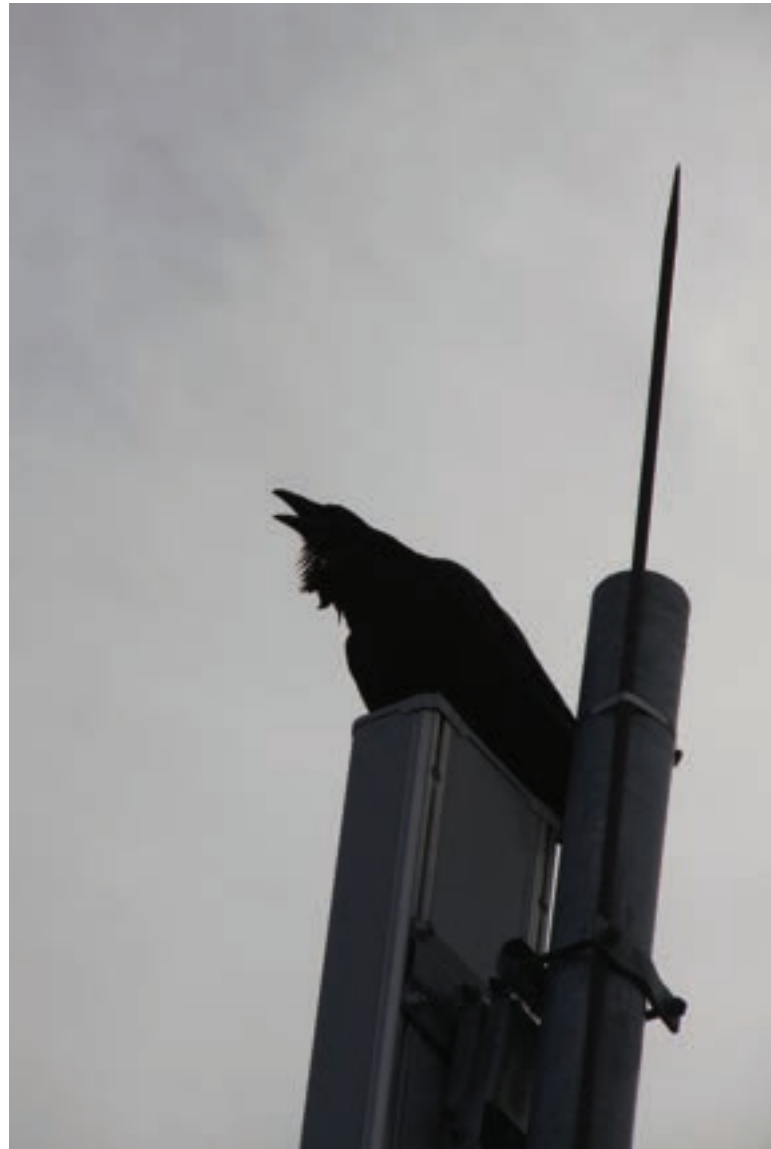
May 7, 2012
I have been trying to write this story for so long, as I can remember, but the words have never I have never felt at ease with being these words on paper.

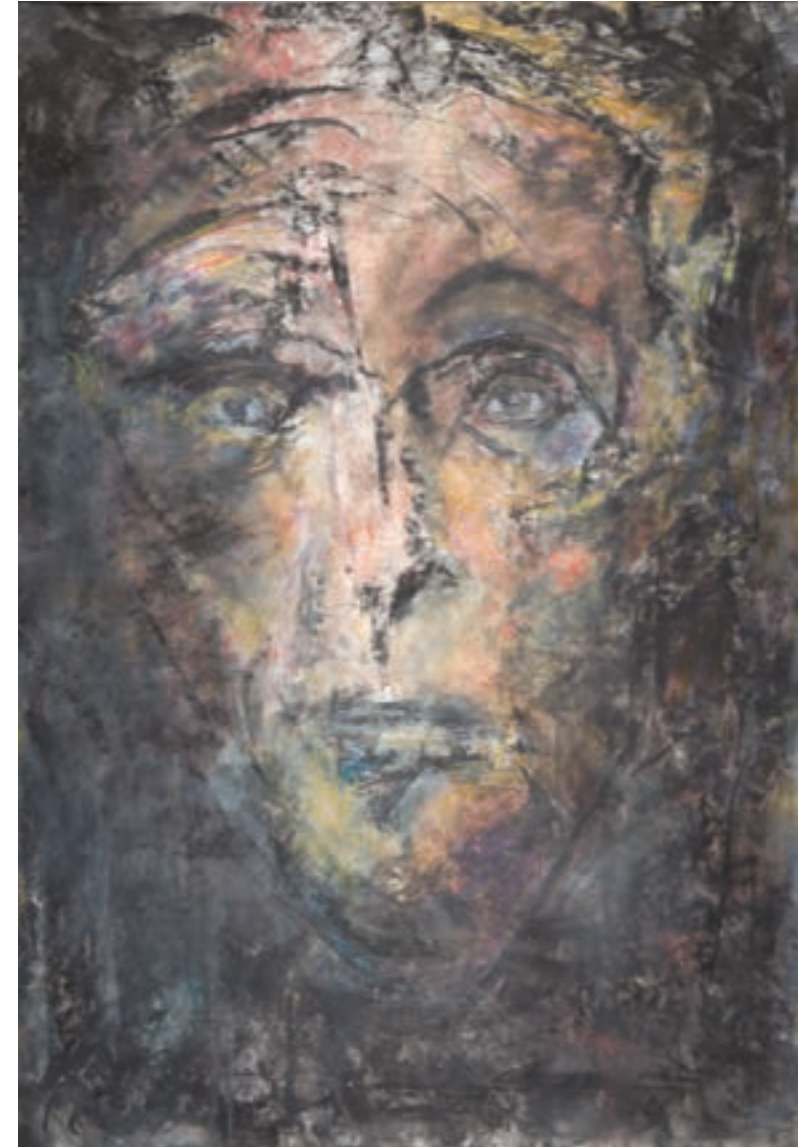
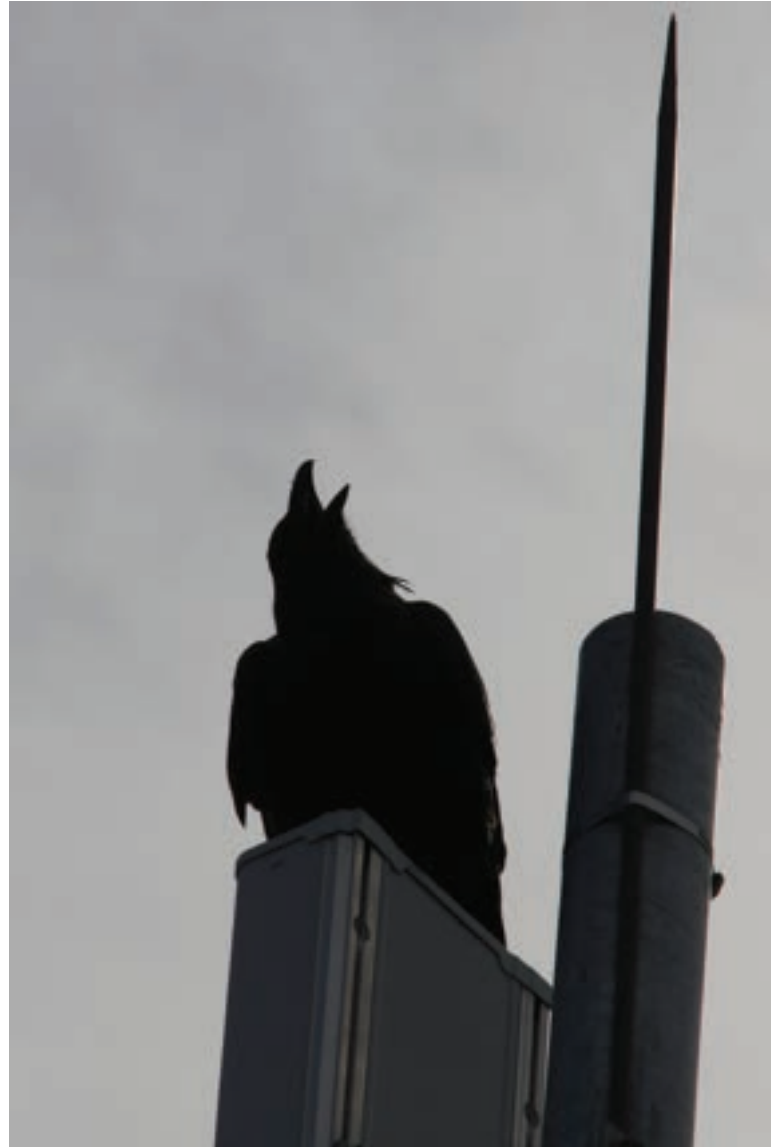


You said, "it's you and me against the world."













44 MONA *Ghost #2 (Too Much and Never Enough)* 2014 acrylic on canvas 26" X 32" \$275.00



AMY E. NES *Vancouver* 2013 oil on canvas 18" X 25" \$150.00



46 STEVEN LEWIS *Carmina* 2013 oil on canvas 20" X 26" \$2000.00



ANNALISE WALMER *Sorrow (After Kathe Kollwitz)* 2011 lino cut 8" X 8.5" \$120.00







52 JAI *The Unconscious Censor* 2013 oil on canvas 30" X 24" \$360.00



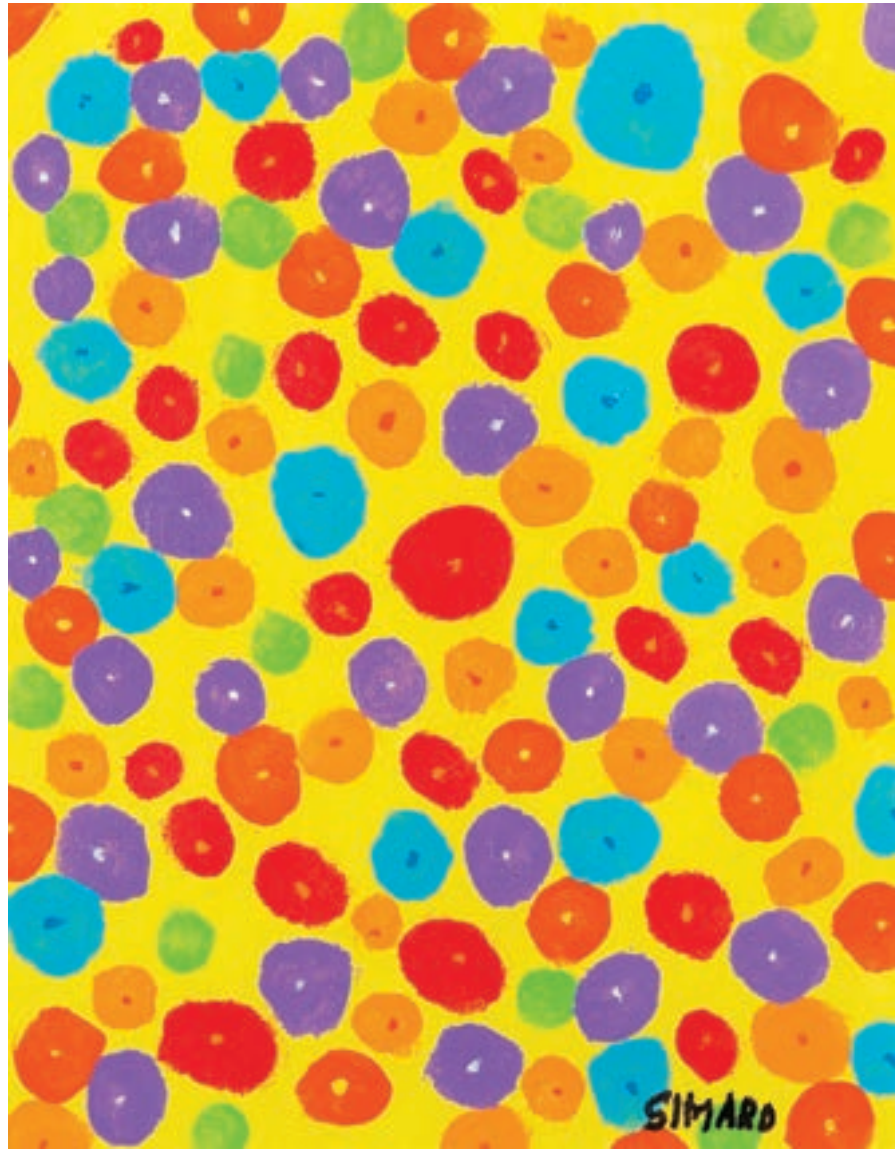
CLARO COSCO *Teeth and Legs* 2013 ink and guache 24" X 19" \$450.00

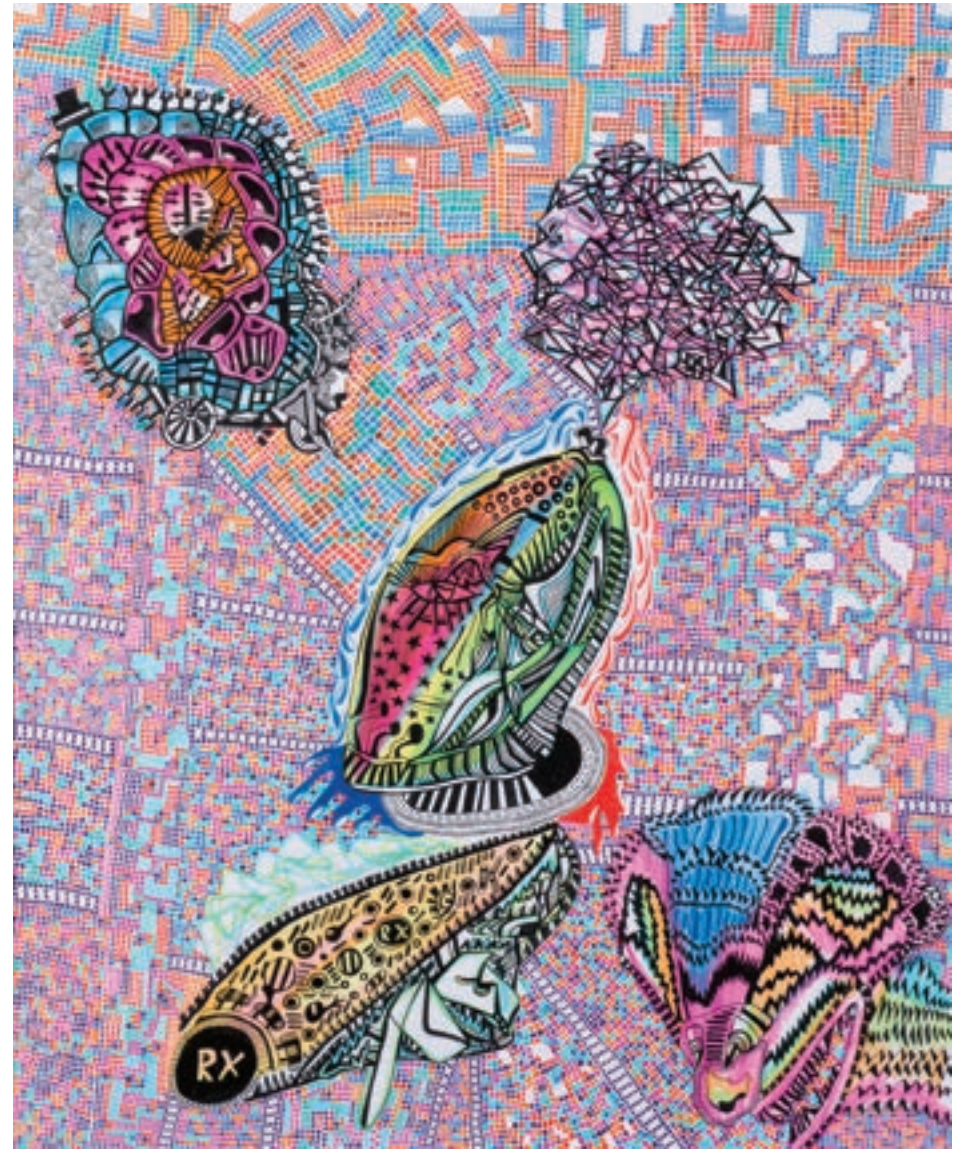


56 MOSHE SPO *Untitled #3* 2014 acrylic 24" X 20" \$500.00



GUY HARRY *Waiting* 2013 oil on canvas 24" X 24" \$250.00







62 NATASHA *Connected!* 2013/14 yarn/sticks 30" x 56" \$500.00



LORETTE C. LUZAJIC *You Will Attract Cultured & Artistic People to Your Home* 2013 mixed media 36" x 24" \$600.00







Workman Arts is one of the largest and longest-running multidisciplinary arts and mental health organizations in Canada and in the world, known internationally for its artistic collaborations, presentations, knowledge exchange, best practices and research in the area of the impact of the arts on the quality of life of people living with mental illness and addiction.

Founded in 1987 by Lisa Brown, a former psychiatric nurse at the CAMH, and guided by the principal that the create process is integral to the quest for personal and spiritual development, Workman Arts has grown over the years from a theatre company of eight members to a multidisciplinary arts organization with over 280 member artists. Located in the arts district in west-end Toronto, Workman Arts manages a 220-seat theatre, visual and media arts studios and training facilities. Its programs, approach and artistic productions have earned it national and international acclaim. An active Board of Directors with representation from the arts, finance and health care sectors support the staff of eight. Workman Arts has a close, long-standing partnership with CAMH, Canada's leading research and clinical facility involved in MH&A.

Since inception, Workman Arts has created award-winning performances and exhibitions. These include annual exhibitions in the visual arts held in leading Toronto arts venues, the production and publication of literary works, over 30 original theatre productions including the Dora award-winning Edward the Crazy Man and Third Eye Looming, the creation of the internationally renowned Madness and Arts World Festival and the first and longest-running mental health film festival in the world, Rendezvous with Madness Film Festival.

Workman Arts supports the creative goals of emerging and established artists with mental health and addiction issues by providing a safe, nurturing environment where artistic projects, professional opportunities and personal and professional networks are developed and fostered. Through participation in creative and collaborative projects that encourage the exchange of ideas between artist and observer, and the shared collective experience of audiences engaging in performances or presentation of works of art, connections are made between Workman Arts artists and the public at large and the discrimination and prejudice associated with mental illness and addiction is eroded.

Everything I've done with Workman Arts has been life changing. Each course or production has been an opportunity to realize my potential. I am becoming my true self and fulfilling life long dreams.

– Sheri STRanger, WA Artist

Workman Arts organization has been positive part of my journey as an artist. Since joining Workman Arts I have been able to get my art practice back on track, exhibit and meet wonderful community.

- L Lokmane, WA Artist



Professional training has been an integral part of Workman Arts' work since the company's inception in 1987. Workman Arts offers high caliber training in Media Arts, Literary Arts, Music, Theatre, and Visual Arts delivered by artists and working arts professionals. These programs support members to reach their potential by honing their artistic skills and practice. Training programs are presented in a variety of formats and durations including: multi-week courses, workshop intensives, seminars and one-on-one mentoring. All training programs are free of charge to members.

TRAINING PROGRAM PHILOSOPHY:

Workman Arts recognizes that its members represent a variety of levels of artistic interest, skill, and talent. Three training streams enable Workman Arts to provide programs according to member needs:

Fundamentals – Technique strengthening with little or no commitment outside of class time and no pre-requisites.

Professional Development – Focusing on best practices and skill sets for developing a professional arts practice which may require commitment to independent work and/or group collaborations, themed work or commitment to develop a specific body of work. Registration may require pre-requisites or formal submission.

Professional Support – Mentorships, projects, commissions and professional opportunities geared towards a presentation and professional income opportunities potentially in partnership or collaboration with other organizations or sponsors. Training at this level requires independent work and prior experience in the specified field. Registration may require a formal proposal.

For over 27 years, Workman Arts' Members have benefited from exceptional programming unlike anything offered elsewhere in the world, while Workman audiences have enjoyed evocative and thought-provoking artistic productions that entertain, educate and challenge public perceptions about mental illness and addiction. This combination, which is so singularly Workman Arts, would not be possible without the generous support of our valued donors. Whether you are an individual or represent a corporation or a foundation, we invite you to become involved today.

For more information or to make a donation please contact 416.583.4339 or visit our website at www.workmanarts.com

As a charitable organization, Workman Arts can issue tax receipts for the full amount of your donation.



ARTIST	TITLE OF WORK	PAGE
Claudette Abrams	<i>Way To Be</i>	27
Talia Baldar	<i>Prince George</i>	60
Marco Buonocore	<i>Untitled, Baracoa 2010</i>	26
Fletcher Chamberlain	<i>The Rest</i>	22
Claro Cosco	<i>Teeth and Legs</i>	53
CS	<i>Anamnesis</i>	8
Nadine Espinoza	<i>Consumption Waves</i>	51
Sylvia Frey	<i>Sketch</i>	65
Sylvia Frey	<i>Weeds</i>	15
Heather Fulton	<i>...As Surely Water Finds Its Own Level</i>	15
Giulio	<i>Nuclear Fusion Ice Storm</i>	13
George S. K. Hardy	<i>Cross Talk 1</i>	38
George S. K. Hardy	<i>Cross Talk 2</i>	39
George S. K. Hardy	<i>Cross Talk 3</i>	40
Guy Harry	<i>Waiting</i>	58
Jai	<i>The Unconscious Censor</i>	52
Catherine Jones	<i>Bing Wants to Play</i>	54
Catherine Jones	<i>In 9th Grade We Went to Florida</i>	55
Steven Lewis	<i>Carmina</i>	46
Steven Lewis	<i>Snake Handler - Mona</i>	48
Carol Lui	<i>Abyss</i>	49
Lorette C. Luzajic	<i>You Will Attract Cultured & Artistic People to Your Home</i>	63
Mary S. Lyons	<i>Dreaming of the Aten</i>	31
Mary S. Lyons	<i>The Great Heretic</i>	41
Betty M	<i>Ankole</i>	59
Barbara Greene Mann	<i>The Boss</i>	32
Calla McCord	<i>Eumenides/Furies</i>	37
Mona	<i>Ghost #2 (Too Much and Never Enough)</i>	44
Carmelo Morra	<i>Valentino</i>	20
Fabian Mosquera	<i>Mickey Mouse Recessitation</i>	61
Natasha	<i>Connected!</i>	62
Ellen Nemetz	<i>Hope Rising</i>	17
Amy E Nes	<i>Vancouver</i>	45
Amy E Nes	<i>Dalton</i>	11
Amy E Nes	<i>RCA Dog</i>	67
Aria Novosedlik	<i>Dayne</i>	29

ARTIST	TITLE OF WORK	PAGE
Aria Novosedlik	<i>Forest</i>	50
Sean Patenaude	<i>View of a Staircase</i>	19
Sean Patenaude	<i>Untitled</i>	27
Murray Pridham	<i>I Thought We Were Children</i>	59
Darius Sanei	<i>Can You Hear the Clock Ticking?</i>	24
Darius Sanei	<i>Metamorphosis</i>	43
Annette Seip	<i>What Happened?</i>	9
Annette Seip	<i>Flesh & Blood</i>	10
Kent Simard	<i>Anemones</i>	58
Moshe SPO	<i>Untitled #3</i>	56
Sheri STRanger	<i>Supernova</i>	12
Monika Szopinska	<i>The Blues</i>	25
Monika Szopinska	<i>Beach</i>	16
Jennifer Tiffin	<i>Untitled 1 (excerpt from Mourning Diary)</i>	34
Jennifer Tiffin	<i>Untitled 3 (excerpt from Mourning Diary)</i>	35
Jennifer Tiffin	<i>Untitled 4 (excerpt from Mourning Diary)</i>	36
Jace Traz	<i>Cubic Nude #1</i>	21
Jace Traz	<i>Rhinoceroses</i>	30
Jace Traz	<i>Aorta Dah</i>	33
Annalise Walmer	<i>Sorrow (After Kathe Kollwitz)</i>	47
Lisa Walter	<i>It is a Knell that Beckons Thee (To Heaven)</i>	42
Kerry Westell	<i>The National Dream (from the CBC Dec. 14, 1987)</i>	28
Julia Zander	<i>Untitled, Masculine Feminine Series</i>	18

Patron	Her Excellency, Sharon Johnston, C.C. Dr. Barbara Dorian and Dr. Paul Garfinkel
Exhibition Producer	Lisa Brown – WA Founder and Artistic / Executive Director
Exhibition Director	Leila Timmins – WA Visual Arts Manager
Jurors	cheyanne turions Erin Stump Lisa Walte
Installation Photography Graphic Design Printing Framing Caterers	Leila Timmins, Erin Stump, Lisa Walter David Sweeney Gust Creative Digital Edge Print and Media Services Adina Photo and Framing Gladstone Hotel
Thank You	To all of the artists who submitted
Special Thanks	Workman Arts Board of Directors, staff and members, Britt Welter-Nolan, Robin Rowe, Michael Torres, Behrouz Shabod, CAMH clients and staff
Workman Arts Board of Directors	Danny Cushing – Chair, Kaye Beeston – Vice Chair, Lisa Brown-Secretary, ex officio, Miles Cohen, Mark Goldbloom, Jenna Leblanc, Patrick Manley, Dr Ivan Silver - ex officio

WORKMAN ARTS STAFF

Founder and Executive/Artistic Director	Lisa Brown
Managing Director	Chris Mitchell
Membership and Training Manager	Danica Brown
Media Arts Manager	Jeff Wright
Visual Arts Manager	Leila Timmins
Technical Director	David Sweeney
Administrative and Outreach Assistant	Lauren Wilson
Visual Artist in Residence	Lisa Walter
Professional Services	Financial Management Lascelle Wingate Management Services
Public Relations	Planet 3 Communications Joanne Smale



Workman Arts' online art rental and sales gallery strives to promote and support member artists through the sale, rental and exhibition of their work to public and private sector clients. The program includes work by both emerging and established artists in a wide variety of mediums and sizes – suitable for display in an office environment. Rental fees are affordable, with most works priced at \$15/month and works are available for purchase starting at \$100. 100% of rental and sales fees directly support individual participating artists.

LIVEN UP YOUR WORKPLACE

Original artworks provide a sophisticated finishing touch for workplaces. Renting art allows our corporate clients to enhance their offices with the work of some of Toronto's finest emerging artists.

TRY BEFORE YOUR BUY

We want you to be certain you love the work you select. Renting from Workman Arts lets you live with artwork before making the commitment to purchase it. Although you can rent any artwork for as many twelve-month rental terms as you like; at the end of each rental term you have the option to buy the work. Workman Arts will apply up to six months of the rental fees paid toward the purchase price.

CREATE NEW VIEWS

Who doesn't need a change of scenery now and then? Renting art lets you change the look of your office or workspace very easily.

To inquire about renting or purchasing work visit www.workmanarts.com/artrentalandsales/ or contact:

Leila Timmins
Visual Arts Manager
416.583.4339 ext. 3
Leila_Timmins@workmanarts.com

RENDEZVOUS WITH **MADNESS** FILM FESTIVAL NOVEMBER 10 - 15, 2014



We hope you have enjoyed Being Scene 2014 and will join us for a year of exciting programs at the 22st Rendezvous with Madness Film Festival Nov 10 - 15, 2014. Be sure to follow us online for information on everything happening at Workman Arts.

www.workmanarts.com
www.rendezvouswithmadness.com
www.facebook.com/workmanarts
www.twitter.com/workmanartsproj