



BEING SCENE 2013

WORKMAN ARTS PRESENTS  
**BEING SCENE**  
13TH ANNUAL JURIED EXHIBITION



PRODUCED BY:



This exhibition is made possible with the support of:

PARTNER:



GOVERNMENT SPONSORS:



VENUE SPONSORS:



PRINT SPONSOR:



COVER IMAGE: The Red Shoes (3) Archival Digital Inkjet Print Catherine Jones 2012



If I were to come up with one word to describe Being Scene and the Visual Arts program at Workman Arts I would say “opportunity”, which is defined “as a chance or opening offered by circumstances”. For the past 25 years, all of us involved have been working to change the circumstances that many artists throughout the ages have struggled to overcome. I am talking about poverty, living with mental illness or addiction, and the effect of discrimination, which is often even more debilitating than the illnesses.

There has been an incredible change of circumstances over the past years and that change has provided a plethora of opportunities. The opportunity for artists to paint in the supportive environment of the Workman Art Studio, to participate in the Training to Creation programs such as Mad Couture Catwalk, to show and sell at solo shows, group and partnered exhibitions and to rent and sell their work through our online Art Gallery. Significant opportunities continually arise for artists who are commissioned to create new work such as the mosaic murals located in the new buildings at the Centre for Addiction Mental Health.

But the opportunities extend beyond the artists, to CAMH and to the community at large. Important relationships continue to be created and strengthened between art lovers and artists and between the Workman Arts and the community. What’s truly exciting is that each year the quality and volume of art submitted continues to grow, making the job of the three jurors even more difficult.

I wish to thank all the artist’s who submitted to this year’s Being Scene, the jurors, the hosting venues and the staff who make this exhibition possible.

Lisa Brown  
Founder and Executive / Artistic Director  
Workman Arts

LETTER FROM FOUNDER AND EXECUTIVE/ARTISTIC DIRECTOR OF WORKMAN ARTS



One of the things I treasure about the launch of a new Being Scene collection is the pure pleasure of viewing the art for the first time. Admiration, stimulation, devastation, inspiration—this is the range of emotions I experience when transported by the creative work of talented Workman artists with lived experience of mental illness and addiction.

Being Scene—like CAMH itself—is continually transforming. This year, Being Scene has branched out beyond its own show, beyond participation in the Contact Photography Festival, to a new venue closer to CAMH’s home: the Shopper’s Drug Mart Gallery Window on Lower Ossington. This surprising artistic venue in a retail space—connecting the redeveloped CAMH Queen West site with the surrounding community through the shared vocabulary of artwork—is catalytic. Stigma and discrimination wither away when great artistry touches the spirit that connects us all.

No wonder I always look forward to Being Scene.

Catherine Zahn, MD, FRCP (C)  
President and CEO  
Centre for Addiction and Mental Health



It gives me great pleasure to welcome you all to the 13th Being Scene Art Exhibit. As the board chair, I have the enviable position of observing all of the programming we offer, and the profound way the company affects so many artists, community members, and audiences.

Workman Arts has had another outstanding year. We kicked off our 25th anniversary with the imaginative and wildly successful Mad Couture Catwalk in partnership with the Art Gallery of Ontario. As part of that event, we also co-hosted an important symposium on Art & Mental Health. You can also see members’ art at Full of Beans Coffee Shop on Dundas Street West and the Shoppers Drug Mart at Queen and Ossington.

Our training programs have also been well-received this year, with lively classes in sculpture, printmaking, small ensembles, improv, and media arts, to name a few. The professional development of our members is a key component in our mandate, and we are always pleased to watch their creative evolution.

This year’s art exhibit offers a wonderful mix of fifty-four artworks by thirty-one artists. As always, this exhibit reflects strong and fascinating submissions from local artists struggling with mental illnesses and addiction issues.

On behalf of the board of directors, congratulations to all the artists, the jurors and staff for once again giving us an outstanding and exciting exhibition.

Daniel Cushing  
Chair, Board of Directors  
Workman Arts



The lead up to our annual Being Scene exhibition is always an exciting time. The call for submissions period gives me the chance to meet new artists and to discover what new works our existing members have created. Every day is a surprise with a constant flow of artists delivering artwork to be considered for the exhibition.

Facilitating the adjudication process is always eye-opening in that I am privileged to see the individual submissions through the lens of our invited jurors' expertise. Our 2013 jurors Noa Bronstein, Sarah Milroy and Jan Swinburne were very focused on selecting works that reflect original ideas, are emotionally expressive and technically strong. These fifty-five artworks reflect this focus.

The featured thirty-one artists' talents and artistic voices are expressed in a wide variety of mediums, styles and subjects. Many of the artists featured this year are new to Being Scene and to Workman Arts. Thank you to our participating artists for creating such exceptional and engaging artworks. And thank you to our jurors for their thoughtful arrangement of the exhibit.

Congratulations to all of the 2013 Being Scene artists.

Chris Mitchell  
Visual Arts Manager  
Workman Arts



Workman Arts offers dedicated working studio space for member artists as well as artists who receive services from CAMH. The studio provides our community of visual artists with much needed physical space for creating as well as professional space for peer collaboration and mentoring. The studio is managed by a Visual Artist in Residence with all artists contributing to the daily operations. Artists access the studio free of charge through short-term studio residencies. The Gord Love Studio space provides artists the opportunity to develop their portfolios, refine their work or focus on a specific body of work or project.

## NOA BRONSTEIN

Selecting the art works for this year's Being Scene exhibition was certainly a challenge. What was immediately apparent in all the works was the strong narrative quality and the highly emotive and communicative features. Brave both stylistically and in terms of media use and subject matter, I was quite moved by the unique approach taken by each artist. The diversity of voices represented by Workman Arts is certainly reflected in the exhibit and by all the submissions and was echoed in the adjudication. Congratulations to all the artists and to everyone at Workman Arts for their continued commitment to sustaining a vital arts community.

Noa Bronstein is a researcher and curator who has been active in the cultural sector for several years. She has held positions at Paperny Films, a Vancouver-based documentary film company, and the Bata Shoe Museum and was the Director of Public Programs and an Acting Curator at the Design Exchange. She has curated several exhibitions including, Come Up To My Room, Out of Sorts: Print Culture & Book Design and Play > Nation: Canada's Outdoor Culture. Currently, Noa is the Director of Exhibitions & Cultural Promotions at the Gladstone Hotel.

## SARAH MILROY

I was struck by the diversity of approaches of the artists gathered here, and by the distinctness of the moods they evoke. Like all good art, these objects have a lot of personality. It was a pleasure getting to know them.

Sarah Milroy is a Toronto-based art critic and writer, and contributes regularly to The Globe and Mail, Canadian Art, Border Crossings and Walrus.

## JAN SWINBURNE

I was pleased to have the opportunity to adjudicate the Being Scene exhibition this year. Chris Mitchell's well honed facilitation of physically viewing 350 or so works of art was just great. Choosing 50 was the hard part. As a jury we collaborated to narrow it down and one often wishes there was room for a few more. I've hung a few group shows and it always is quite thrilling how one sees conversations between different artists' works start to form, the visual and/or thematic relationships, the pieces that whisper and the ones that shout. As individuals, when it comes to visual art, the conversations that we hear are all a bit different. That's the real reward. Thanks Chris, Sarah and Noa for a great experience and to all the artists who submitted.

Jan Swinburne is a visual artist whose practice is centered on concepts worked through paint and other materials that at times mutate into large-scale, site-specific installations. Jan Swinburne lives and works in Toronto, has contributed to international art projects, presentations and books with a focus on inclusive practices. Jan is a member of Workman Arts' visual arts advisory committee and has worked in the disability/psychiatric community as an art facilitator. Jan is a constituent of the alumni of Dawson College and the Ontario College of Art and Design University.

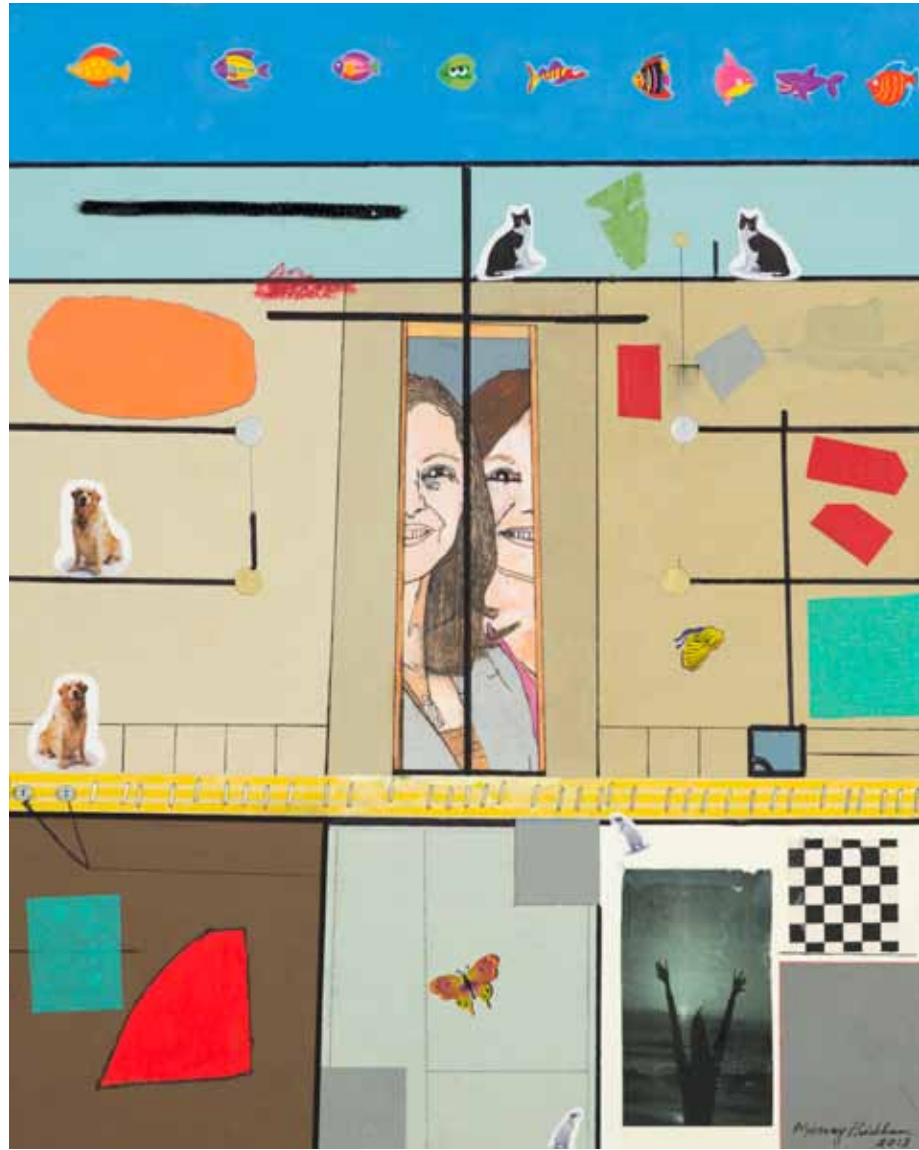


08 CHRIS SCOTT Exodus 2013 acrylic on canvas 30" x 40"



JACE TRAZ Bonerland #3 2012 pen on paper 30" x 22"











18 SHERI STRANGER Inversion 2012 acrylic on rock paper 25" x 36"



RICHARD BUTLER The All-Seeing Eye 2010 acrylic on canvas board 18" x 24"



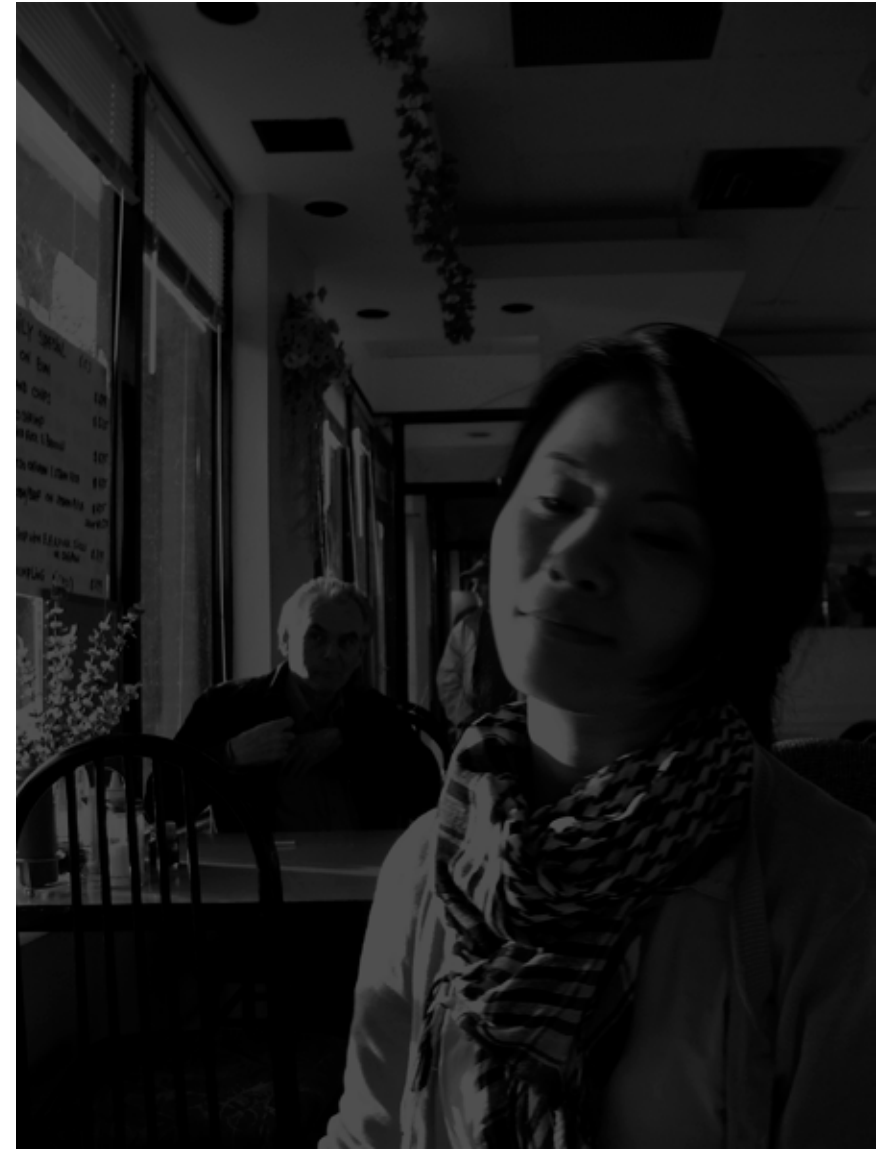
20 DIANA Love Transformed 2011 acrylic on canvas 12" x 12"



DIANA Back, Forth 2011 acrylic on canvas 6" x 8"



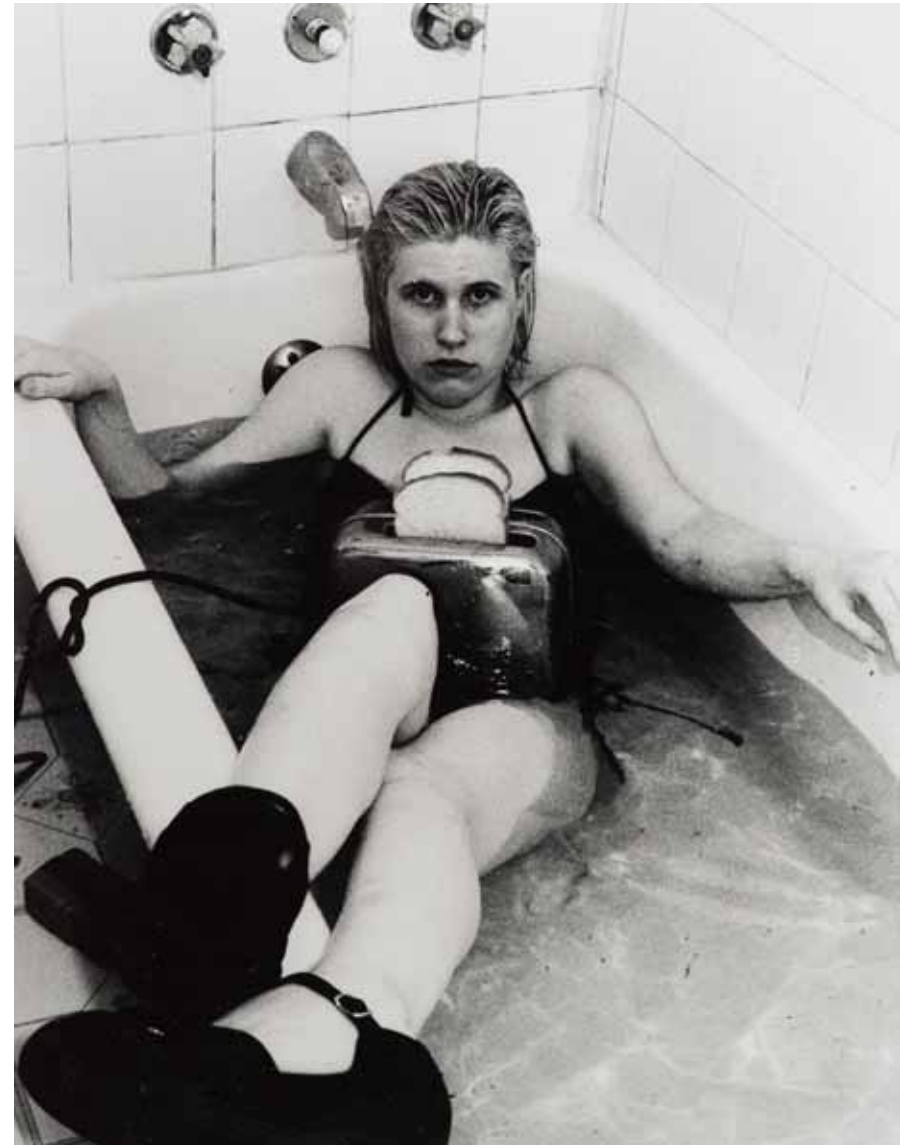
22 GEORGE S. K. HARDY Cold Memory 2011 photograph 12" x 18"



GEORGE S. K. HARDY Fading Memory 2011 photograph 12" x 18"

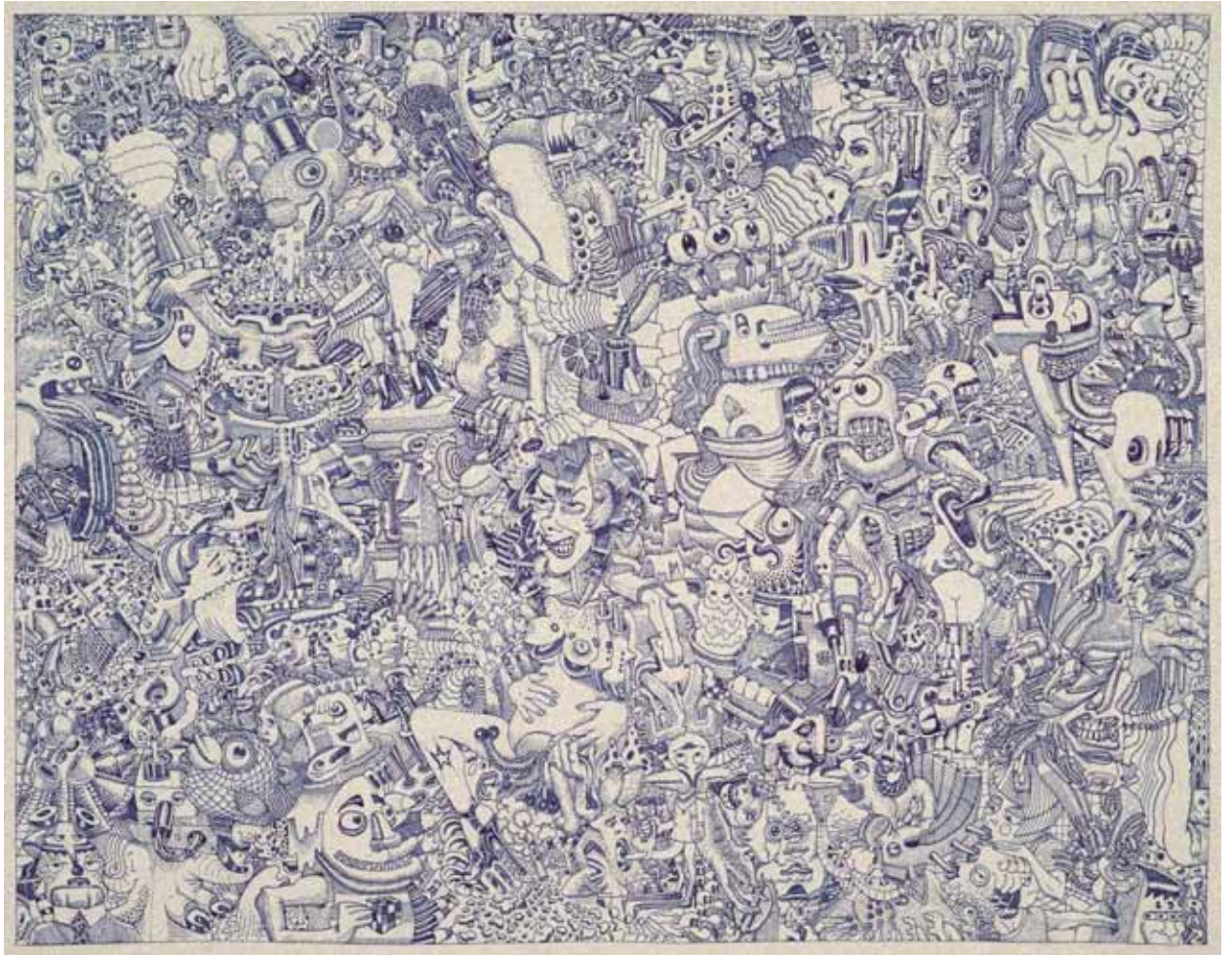


24 DIANA Follow the Rabbit 2012 acrylic on canvas 30" x 30"

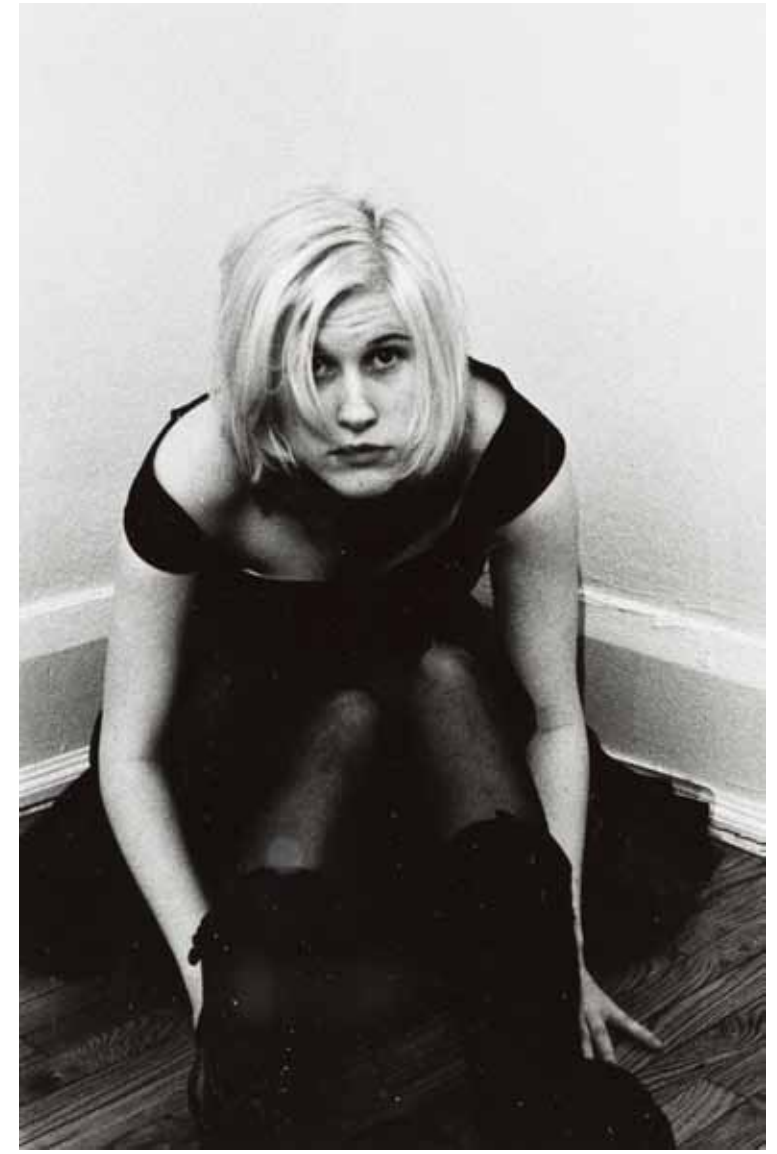


BECCA DOWDEN

Untitled/Self-Portrait b 2012 gelatin silver print 8" x 10"













36 MORRADD Rocky-Clean 1980 oil and acrylic 18" x 24"



A. JAY Arcadia I 2012 watercolour on paper 9" x 12"



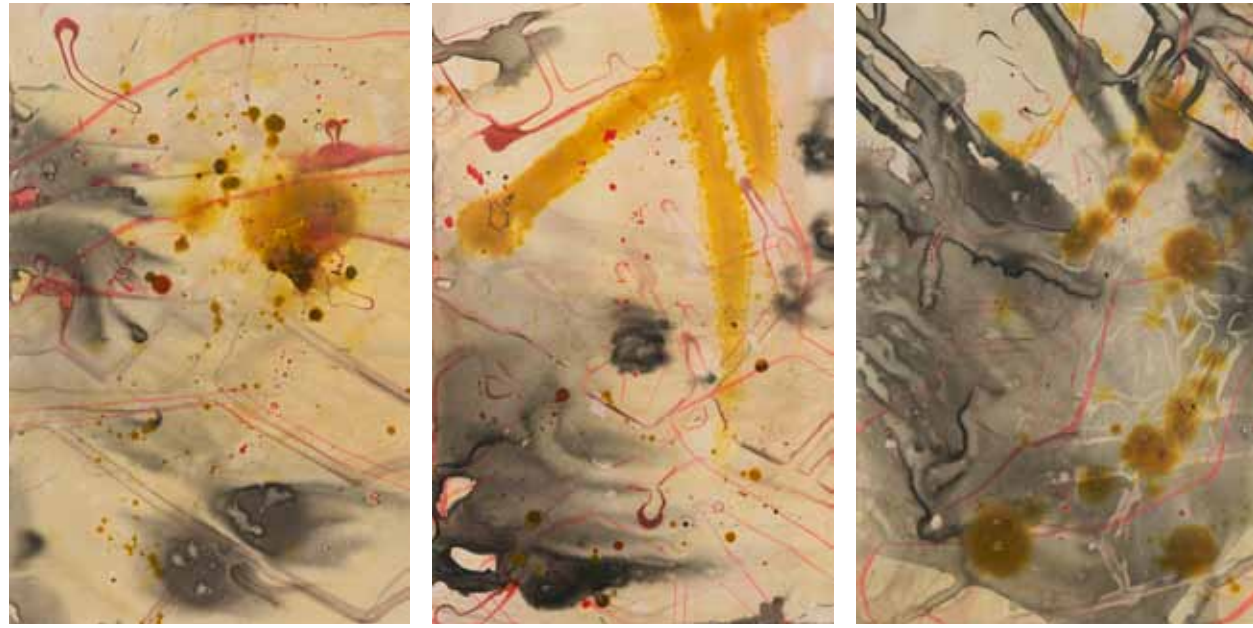
38 ANN DAVIDSON Birch Tree - Autumn in Ottawa Valley acrylic on masonite 9" x 12"

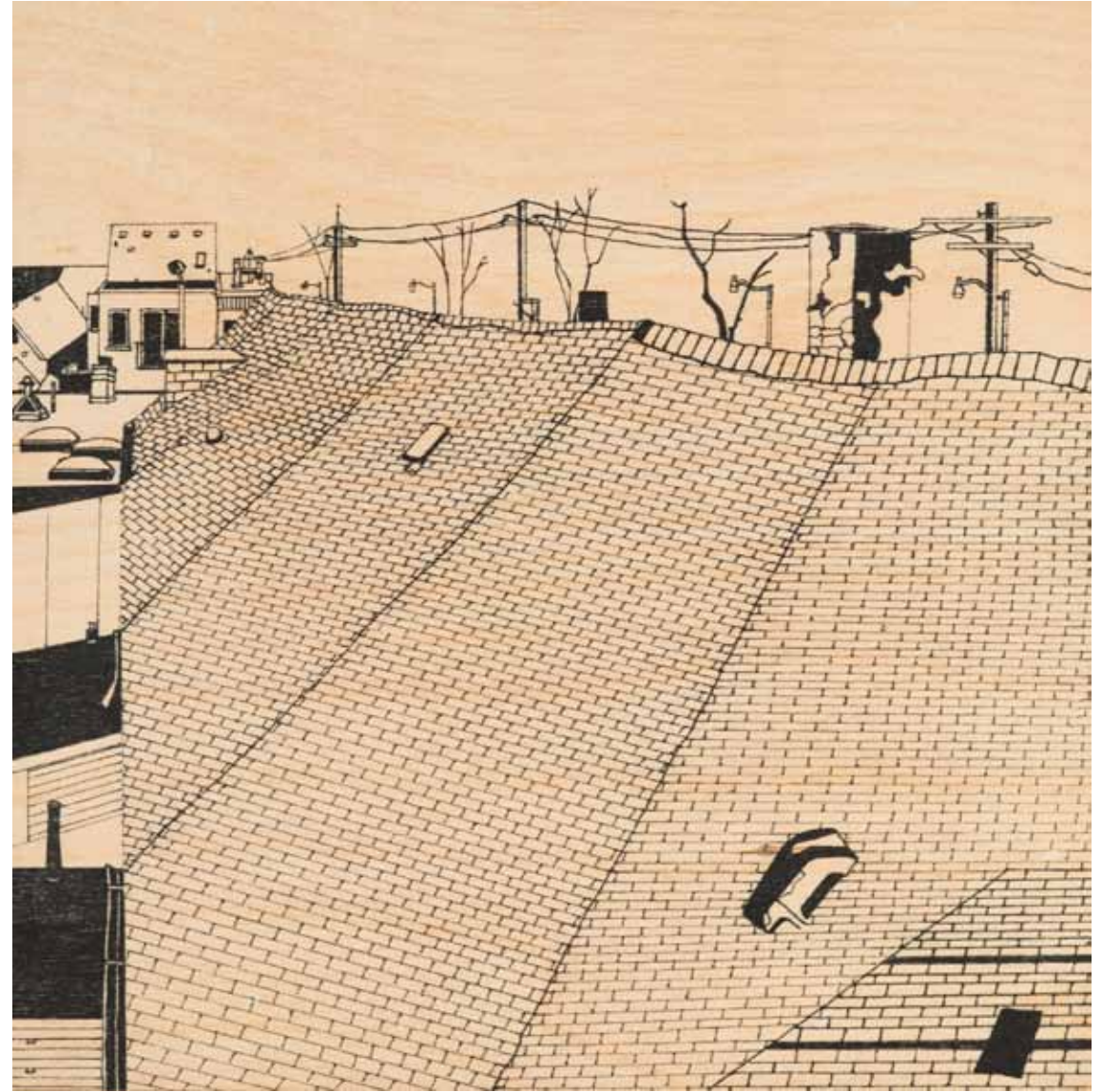


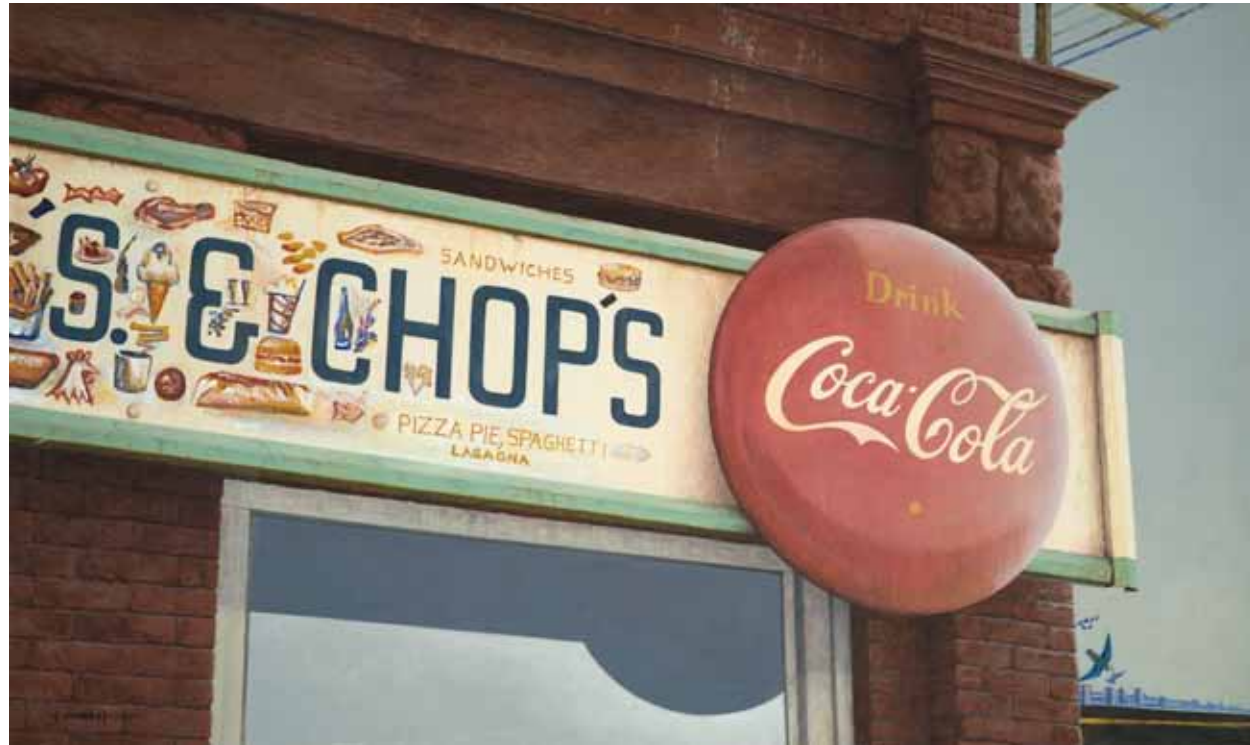
TREESE FLENNIKEN Threads Among the Needles 2013 photograph 18" x 12"

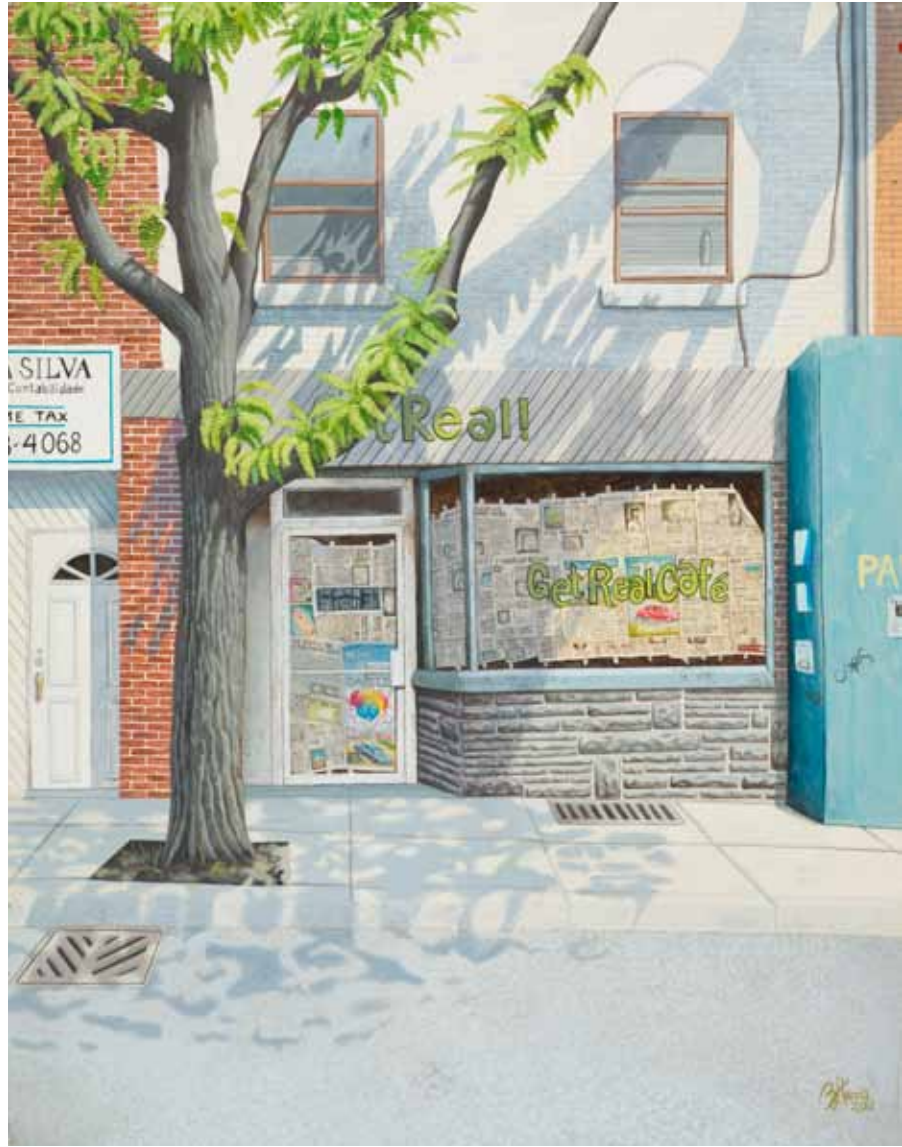






















Workman Arts Project of Ontario (WA) is pleased to have just celebrated 25 years as a unique, multidisciplinary arts organization focusing on artists living with mental illness and/or addiction issues. Founded in 1987 by Executive/Artistic Director Lisa Brown, WA seeks to empower its artist members through training, performances, exhibits and through partnering with other arts organizations.

WA began as a theatre company with eight members and now boasts 230 artists training and working in theatre, music, literary arts, visual arts and film/media arts. Members have access to the best artist-trainers in Ontario, offering courses and workshops in areas such as poetry (bill bissett), theatre (Edward Roy), film (Chris Landreth), opera (Kyra Millan) and visual arts (Erin Finlay). Serving artists at all career stages, programs help members fulfill their creative potential, either by focusing on their artistic development, health or personal fulfillment. WA allows members the opportunity to engage in meaningful activities which build on their strengths rather than focusing on their illnesses.

WA activities impact not only member artists, but audiences worldwide through diverse artistic programming, including 20 editions of the Rendezvous with Madness Film Festival, 13 annual Being Scene visual arts exhibitions, the production of 20 original plays, and the founding edition of the international Madness and Arts World Festival. WA's impact is important for all audiences, but most especially for youth. Rendezvous in the Classroom is a unique program offering films suited to children and youth, accompanied by discussions with artist filmmakers and mental health workers.

As an international leader in the field of mental illness and the arts, WA has a strong commitment to research, particularly with the University of Toronto, to document and share the impacts of its activities. Among the research projects underway are studies of the efficacy of the Rendezvous in the Classroom program and an ongoing assessment of member artists and the impact of WA programming on their quality of life.

True expression comes out of faith. At Workman Arts this is proven every time someone puts pen to paper, to write a play, draw a picture, compose a piece of music, take a workshop, to be themselves. All these activities are brought to a larger public in the form of art exhibitions, a film festival, the staging of plays, music, and writing.

And yes, there is a certain air of healthy competition, people trying to do the best they can. More surprising is to see an individual whose illness is plain to see. Yet look at their art and you will be astonished; how can this be?

Over 230 people are members at Workman Arts. We form a community of exchange, and understanding, where spirit, expression and diversity manifests, and many times small miracles do happen.

– Peter Smith, Visual Artist, Workman Arts Member (1959-2009)

The Workman Arts Project of Ontario (Workman Arts), established in 1987, was founded on the principle that the creative process is integral to the quest for personal and spiritual development. Workman Arts is a not-for-profit professional arts company in partnership with the Centre for Addiction and Mental Health (CAMH).



Workman Arts is a member-based organization with over 250 active members. Any individual who lives with and receives, or has received, services for mental health or addiction issues, in the Greater Toronto Area and is interested in developing their artistic talents, is eligible to become a member and access Workman Arts programs and services free of charge.

Members arrive at Workman Arts with a variety of levels of artistic interest, skill, and talent. Some come to Workman Arts with extensive arts backgrounds, while others are entering the art world for the first time. Workman Arts' goal is to meet the needs of members at both ends of the spectrum, as well as everyone in between.

If you are interested in becoming a member of Workman Arts, and for further information about membership please, contact our Membership and Training Manager, Danica Brown, at [danica\\_brown@workmanarts.com](mailto:danica_brown@workmanarts.com) or 416.583.4339.

Training has been an integral part of Workman Arts' work since the company's inception in 1988. Workman Arts offers high calibre training in Film/Media Arts, Literary Arts, Music, Theatre, and Visual Arts, delivered by artists and working arts professionals. Workman Arts uses an innovative, non-service delivery model, which allows member consumers/survivors the opportunity to engage in meaningful activities that build on their strengths rather than focus on their illnesses. The model also allows members to participate in decision-making and assume leadership roles, to gain training to enhance their business skills and work with professional artists. Workman Arts recognizes that its members represent a variety of levels of artistic interest, skill, and talent. Training streams enable Workman Arts to program according to member needs.

For just over 25 years Workman Arts members have benefited from exceptional programming unlike anything offered elsewhere. Workman audiences have enjoyed thought-provoking artistic productions that entertain, educate, and challenge their perceptions about mental illness and addiction. This combination, which is so singularly Workman Arts, would not be possible without the generous support of donors. Whether you are an individual or represent a corporation or a foundation, we invite you to get involved today.

For more information or to make a donation please contact 416.583.4339 or visit our website at [www.workmanarts.com](http://www.workmanarts.com)

As a charitable organization, Workman Arts can issue tax receipts for the full amount of your donation.



ARTIST	TITLE OF WORK	PAGE
Melissa Bender	Secrets and Lies	10
Melissa Bender	Look to the Stars	11
Robbie Briane	A Painter's Nightmare	32
Richard Butler	The All-Seeing Eye	19
Linda Carter	Trestle Bridge Credit River #1	46
Linda Carter	Trestle Bridge Credit River #2	46
Cassandra Clayton	Winter Rooftops	47
Ann Davidson	Across Bellows Bay - Big Rideau Lake	35
Ann Davidson	Road to Quiet Waters - Big Rideau Lake	34
Ann Davidson	Birch Tree - Autumn in Ottawa Valley	38
Diana	Follow the Rabbit	24
Diana	Love Transformed	20
Diana	Back	21
Diana	Forth	21
Becca Dowden	Untitled/Self-Portrait b	25
Becca Dowden	Exodus/Self-Portrait	30
Becca Dowden	Everything I Ate	26
Becca Dowden	Untitled/Self-Portrait a	31
Emily Eng	The Unknown	42
Nadine Espinoza	Nightmare in Tow	45
Nadine Espinoza	Prism Splash	41
Faeghan	Lost in Translation	13
Treese Flenniken	Threads Among the Needles	39
George S. K. Hardy	Fading Memory	23
George S. K. Hardy	Cold Memory	22
M. J. Harris	Get Real Café, Ossington St	50
M. J. Harris	The Other Side of the Fence	51
M. J. Harris	Straw #9	51
A. Jay	Arcadia I	37

ARTIST	TITLE OF WORK	PAGE
Catherine Jones	See No Evil (Bear)	55
Catherine Jones	The Red Shoes (3)	29
Lynette Lucinda	Lotus Flower	33
Lynette Lucinda	Enjoying Home	49
Lynne	Rising	59
Lynne	Buddha	58
Ingrid Mathison	Lady by the Lake: Self Portrait - Melancholy	53
Ingrid Mathison	Jack the Labrador	54
Greg Allan McGivern	NYC by Water- Eco Cityscape	43
Michael Mills	Dream 31	14
Morradd	Rocky-Clean	36
Morradd	Coca Cola Restaurant	48
Natasha	Girl Committed	28
Murray Scott Pridham	Maybe	12
Sheri STRanger	Inversion	18
Sheri STRanger	Dispatch 1-2-3 (triptych)	44
Chris Scott	Exodus	08
Carrie Steenburgh	Aware	40
Jace Traz	Bonerland #3	09
Jace Traz	Bonerland #4	27
Lisa Walter	Hang Bird	15
Lisa Walter	Jesus Bird	16
Lisa Walter	Carrion Crow	17
Jai Wax	A Helping Hand	57
Jai Wax	The Oracle of Loneliness	56
(LAW) Laurel Woodrow	Queen Street West	52

Patron	Her Excellency, Sharon Johnston, C.C.
Honorary Patrons	Dr. Barbara Dorian and Dr. Paul Garfinkel
Exhibition Producer	Lisa Brown – WA Founder and Executive/Artistic Director
Exhibition Director	Chris Mitchell – WA Visual Arts Manager
Jurors	Noa Bronstein Sarah Milroy Jan Swinburne
Installation	Chris Mitchell
Photography	David Sweeney
Graphic Design	Gust Creative
Printing	Digital Edge Print and Media Services
Framing	Adina Photo and Framing
Caterers	Hart House and Gladstone Hotel
Thank You	To all of the artists who submitted
Special Thanks	Workman Arts Board of Directors, staff and members, Susan Pigott, Robin Rowe, Michael Torres, Behrouz Shabod, CAMH clients and staff
Workman Arts Board of Directors	Daniel Cushing – Chair, Kate Dewhirst - Vice Chair, Kaye Beeston, Mark Belvedere, Lisa Brown - Secretary, Ex Officio, Leslie Dolman, Richard Caballero, Miles Cohen, Susan Pigott - Ex Officio, Nanette S. Sanson
25th Anniversary Committee	Kaye Beeston, Bob Swan, Lisa Brown, Miles Cohen, Dianne MacFarlane, Susan Pigott, Nanette S. Sanson

WORKMAN ARTS STAFF

Founder and Executive/Artistic Director	Lisa Brown
Managing Director	Jessa Agilo
Membership and Training Manager	Danica Brown
Media Arts Manager	Matthew Hogue
Visual Arts Manager	Chris Mitchell
Technical Director	David Sweeney
Administrative and Outreach Assistant	Lauren Wilson
Poet in Residence	bill bissett
Visual Artist in Residence	Lisa Walter
Professional Services	Financial Management Lascelle Wingate Management Services
Public Relations	Planet 3 Communications Joanne Smale and Sarah Zajac



Workman Arts' online art rental and sales gallery strives to promote member artists through the sale, rental and exhibition of their work to public and private sector clients. The program's inventory includes works by a wide variety of artists – emerging and established – in a wide variety of mediums and sizes - suitable for display in an office environment. Affordable rental fees are based on a percentage of the sales prices, beginning at \$15 per month for rentals. Works are available for purchase starting at around \$100. 100% of rental and sale fees directly support individual participating artists.

#### LIVEN UP YOUR WORKPLACE

Original artworks provide a sophisticated finishing touch for workplaces. Renting art allows our corporate clients to enhance their offices with the work of some of Toronto's finest emerging artists.

#### TRY BEFORE YOU BUY

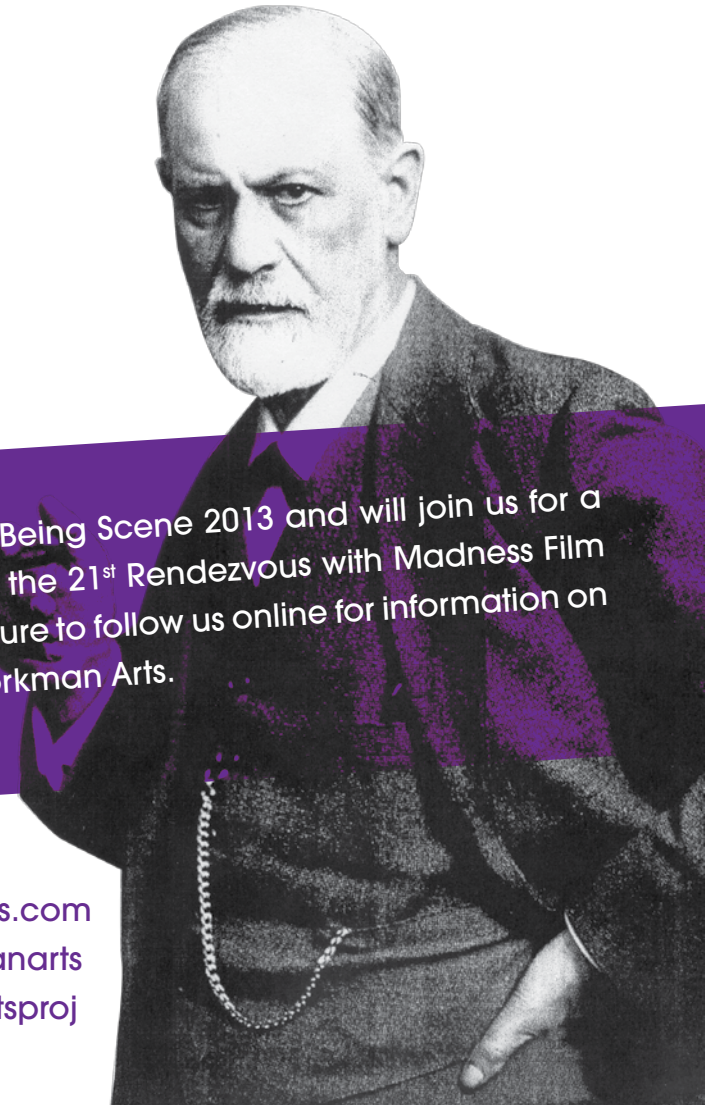
We want you to be certain you love the artwork you select. Renting from Workman Arts lets you live with artwork before making the commitment to purchase it. Although you can rent any work of art for as many six-to-twelve month rental terms as you like; at the end of each rental term you have the option to buy the work. Workman Arts will apply up to six months of the rental fees paid toward the purchase price.

#### CREATE NEW VIEWS

Who doesn't need a change of scenery now and then? Renting art lets you change the look of your workspace or office very easily.

To inquire about renting or purchasing work visit [www.workmanarts.com/artrentals/](http://www.workmanarts.com/artrentals/) or contact:

Chris Mitchell  
Visual Arts Manager  
416.583.4339 Ext 3  
[Chris\\_Mitchell@workmanarts.com](mailto:Chris_Mitchell@workmanarts.com)



We hope you have enjoyed Being Scene 2013 and will join us for a year of exciting programs at the 21<sup>st</sup> Rendezvous with Madness Film Festival Nov 11 – 17, 2013. Be sure to follow us online for information on everything happening at Workman Arts.

[www.workmanarts.com](http://www.workmanarts.com)  
[www.rendezvouswithmadness.com](http://www.rendezvouswithmadness.com)  
[www.facebook.com/workmanarts](http://www.facebook.com/workmanarts)  
[www.twitter.com/workmanartsproj](http://www.twitter.com/workmanartsproj)