



BEING SCENE 2012

WORKMAN ARTS PRESENTS  
**BEING SCENE**  
12TH ANNUAL JURIED EXHIBITION



PRODUCED BY:



This exhibition is made possible from the support of:

PARTNER:



GOVERNMENT SPONSORS:



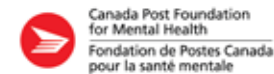
VENUE SPONSORS:



PRINT SPONSOR:



TRAINING SPONSOR:



COVER IMAGE: Claudette Abrams Duality (2011)



This year marks our 25th Anniversary and the 12th Annual Being Scene.

1987 seems like yesterday. Everything has changed and yet nothing has changed. What hasn't changed is the phenomenal artistry of our members that inspired the inaugural Being Scene Exhibition in 1999. What has changed are the opportunities and recognition that our artists are now receiving not only in our growing community but also in the broader cultural establishment in Toronto and abroad. This change is due in no small part to the jurors who have devoted their time and expertise over the years, to our generous funders and patrons, to the volunteers and to our wonderful staff members who have worked behind the scenes to make it all seem so effortless. Thank you.

I count myself one of the most privileged people on earth. Twenty five years of witnessing the artistry, beauty, courage, caring, determination, gentleness, generosity, goodness, honesty, instinct, intuition, independence, kindness, mystery, sincerity, patience, success, understanding and unselfishness.

To the Being Scene artists both past and present and on behalf of everyone who has ever born witness to you, your art and your soul, thank you. You have done it again!

Lisa Brown  
Founder and Executive / Artistic Director  
Workman Arts

LETTER FROM FOUNDER AND EXECUTIVE/ARTISTIC DIRECTOR OF WORKMAN ARTS



Welcome to Being Scene 2012.

Dazzling—that's the word that comes to mind when viewing this year's show by the talented artists affiliated with Workman Arts.

These individual artworks display creative mastery of a wide variety of visual media and include many different themes. Overall, the show itself displays distinctive personality traits: artistic strength, a desire for deep communication, and a celebration of difference as the core of our common humanity.

CAMH is extremely proud to sponsor Workman Arts. By once again exhibiting Being Scene 2012 at neighbourhood venues like the Gladstone Hotel and Hart House, Workman Arts enriches the community and helps deepen the connections between us all.

Catherine Zahn, MD, FRCP (C)  
President and CEO  
Centre for Addiction and Mental Health



Six years ago I was invited by a well-known Toronto artist to attend my first Being Scene art exhibition at the Centre for Addiction and Mental Health at the Queen St. site. The quality and breadth of the works in the show turned out to be a revelation. These works could easily have been hanging in any contemporary art gallery on Queen Street and they wouldn't have appeared out of place.

As the Chair of the Board of Directors of Workman Arts I'm now in the fortunate position of welcoming you, on behalf of my fellow board directors, to this year's Being Scene exhibition. The exhibition reflects the remarkable talents of a group of gifted visual artists who continue to develop their craft with the support of Workman Arts.

I want to thank you for your support of the artists in our company and remind you that there is no greater compliment that you can give an artist than to purchase one of their works.

Daniel Cushing  
Chair, Board of Directors  
Workman Arts



The lead up to our annual Being Scene exhibition is always an exciting time. The call for submissions period gives me the chance to meet new artists and to discover what new works our existing members have created. Everyday is a surprise with a constant flow of artists delivering artwork to be considered for the exhibition. This year's exhibition is truly significant as it is part of our 25th Anniversary programming.

Our jurors, Jamie Angell, owner of Angell Gallery, Workman Arts Visual Artist in Residence Lisa Walter, and Artist and Gladstone Hotel President Christina Zeidler were thoughtful and diligent in selecting 57 works for exhibition from over 320 submissions.

The featured thirty-eight artists' talents and artistic voices are expressed in a wide variety of mediums, styles and subjects. Many of the artists featured this year are new to Being Scene and to Workman Arts. Thank you to our participating artists for creating such exceptional and engaging artworks. And thank you to our jurors for their thoughtful arrangement of the exhibit.

Congratulations to all of the 2012 Being Scene artists and to Workman Arts for 25 years of success!

A handwritten signature in black ink that reads "Chris Mitchell". The signature is written in a cursive, flowing style.

Chris Mitchell  
Visual Arts Manager  
Workman Arts



Workman Arts offers dedicated working studio space for member artists. The studio provides our community of visual artists with much-needed physical space for creating as well as professional space for peer collaboration and mentoring. The studio is managed by a Visual Artist in Residence with all artists contributing to the daily operations. Artists access the studio free of charge through short-term studio residencies. The Gord Love Studio space provides artists the opportunity to develop their portfolios, refine their work or focus on a specific body of work or project.

## JAMIE ANGELL

As an art professional I see a lot of art produced locally and internationally by many top-notch artists, and therefore I entered the process of choosing art pieces for Being Scene without high expectations. I was proven wrong. The visual engagement which I experienced was instant and I was enthralled with the quality of artwork which included photography, painting, drawing and printmaking. Often with “works of art”, the most penetrating come from digging deep into one’s psyche; driven to express one’s emotions, conflicts and answers to questions which cannot always be revealed by words. There wasn’t a shortage of soulful, thoughtful and meaningful visual statements, and my colleagues Christina and Lisa surely concurred.

Jamie Angell is a pioneer of the contemporary art scene in Toronto. In 1996, he became the first contemporary art dealer to establish a space on Queen Street, west of Trinity Bellwood’s Park. Angell actively championed the area and helped lead the charge for the birth of what is now called the WQW Art + Design District. In 2010, Angell Gallery moved its headquarters from Queen Street West to Ossington Avenue and houses 4,000 square feet with three exhibition spaces including a room dedicated exclusively to video art. The gallery has profiled artists from Toronto, Montreal, London, New York and Berlin, working in a variety of mediums such as sculpture, painting, video, photography, and digital media. This year, 2012, marks the 16th anniversary of Angell Gallery.

## LISA WALTER

Adjudicating Being Scene 2012 was a humbling experience for me. Prior to the adjudication, the number of works submitted for the show had been growing in our Program Office. To see them then, all laid out side by side across the studio, was to glimpse the richness of the diversity, creativity, and voices our extraordinary artists have to offer. Paring down the selection, then doing so again, and then working to draw out the structure of the show as a whole through curation, was daunting.

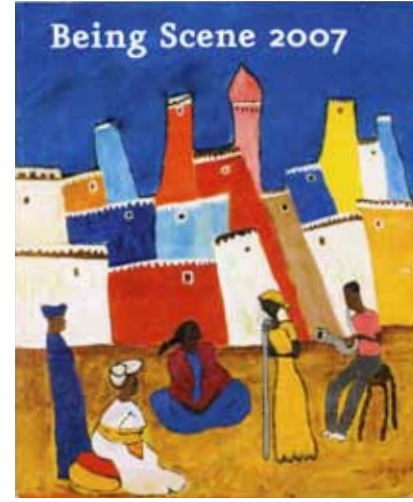
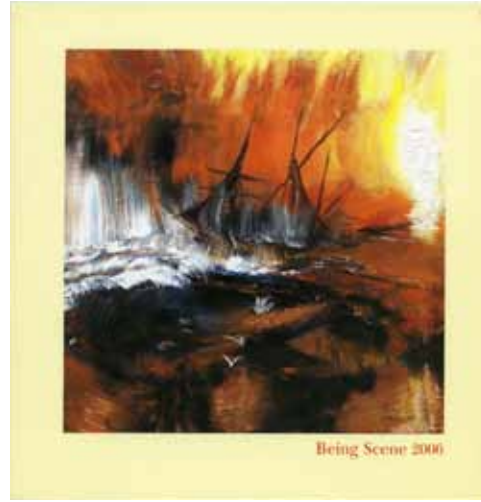
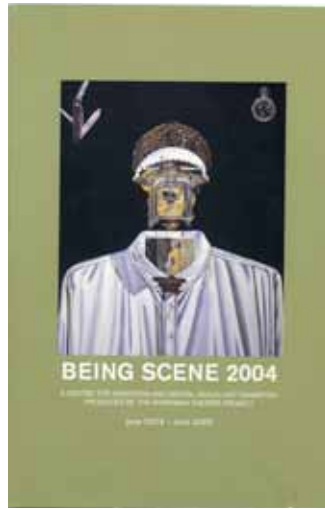
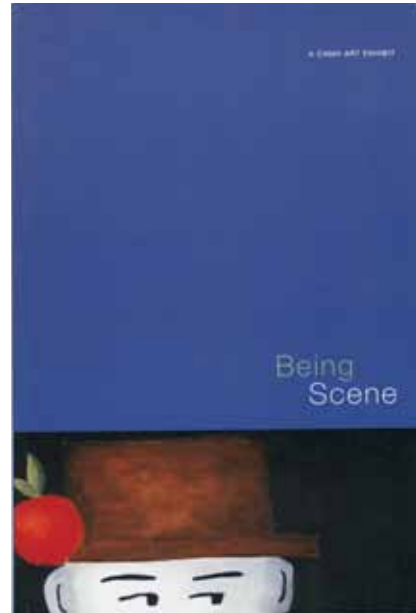
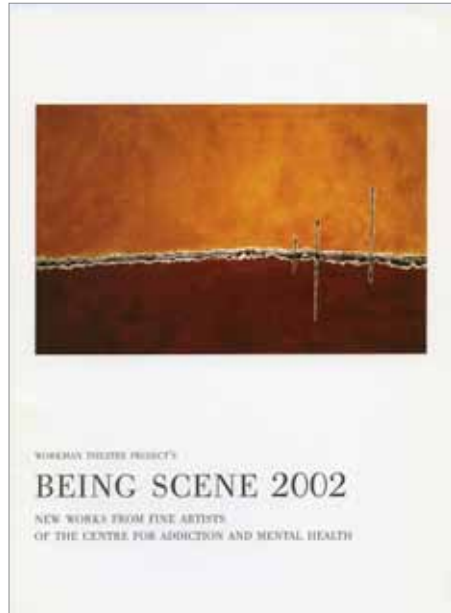
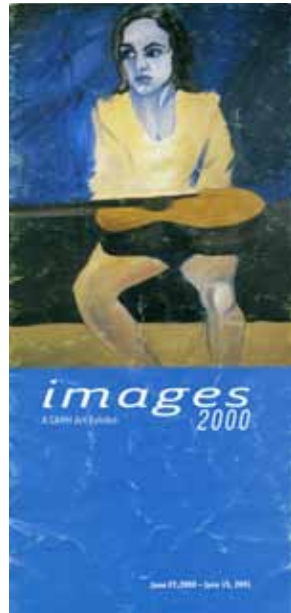
Seeing all the pieces as a whole reinforced my sense that the work of our membership is, if not a cut above, then a cut aside the everyday. It has never seemed clearer to me that our artists, perhaps not consciously, but in self-awareness, are articulating the new language of the mad, the language of everything outside the mind and dreams expected of us. Just listen.

Lisa Walter is a multi-faceted artist, educator, and journalist who lives and works in Toronto. Her first full-length play, *Difference of Latitude*, was published in an anthology by Canadian Playwrights Press in 2005. She has been exhibiting her visual art since 2010, including two works for *Nuit Blanche*, and participated as a visual and media artist with *Rendezvous with Madness Film Festival* in 2010 and 2011. The *Globe and Mail* has described her work as “delicate and unsparing.” Lisa is the 2011- 2012 Visual Artist in Residence at Workman Arts.

## CHRISTINA ZEIDLER

I was thrilled to be asked to participate in the jury sessions for the Being Scene exhibition. I have known about the show for several years and have been impressed not just by the quality of work, but also the community spirit the show represents. It is very important that we look at mental health and the expression of creativity through the lens of community. What a feeling to walk into Workman Arts and see all the work ready for jury: a sea of expression, many voices represented. Congratulations to the members who participated in the creation of the art work and your community.

Christina Zeidler is a film and video artist with over thirty short film and video titles in distribution. She was named one of Toronto’s 10 best Filmmakers by Cameron Bailey and won the Best Canadian Media Award at the 2004 Images Film Festival. Zeidler is also one half of the euro-electronica-pop-diva sensation “ina unt ina” and part of the newly formed band “Mintz”. Christina Zeidler has been the developer and president of the historic GLADSTONE HOTEL in Toronto since 2003, focusing on the renovation and revitalization of the building through a community-based approach. She is the creator of the “Artist Designed Room Project” using local artist/designers to implement individually designed hotel rooms, even creating a room herself entitled “snapshot”. In her spare time Christina engages in as much community activism as possible.







12 VIJA FRANCIS-CELMINS Tip of Smith Bay (Dollars Lake, Ont) (2012) acrylic on canvas - 40" x 30"



MICHAEL MILLS Night Tree (Diptych) (2012) digital photo - 17" x 14" (ea)

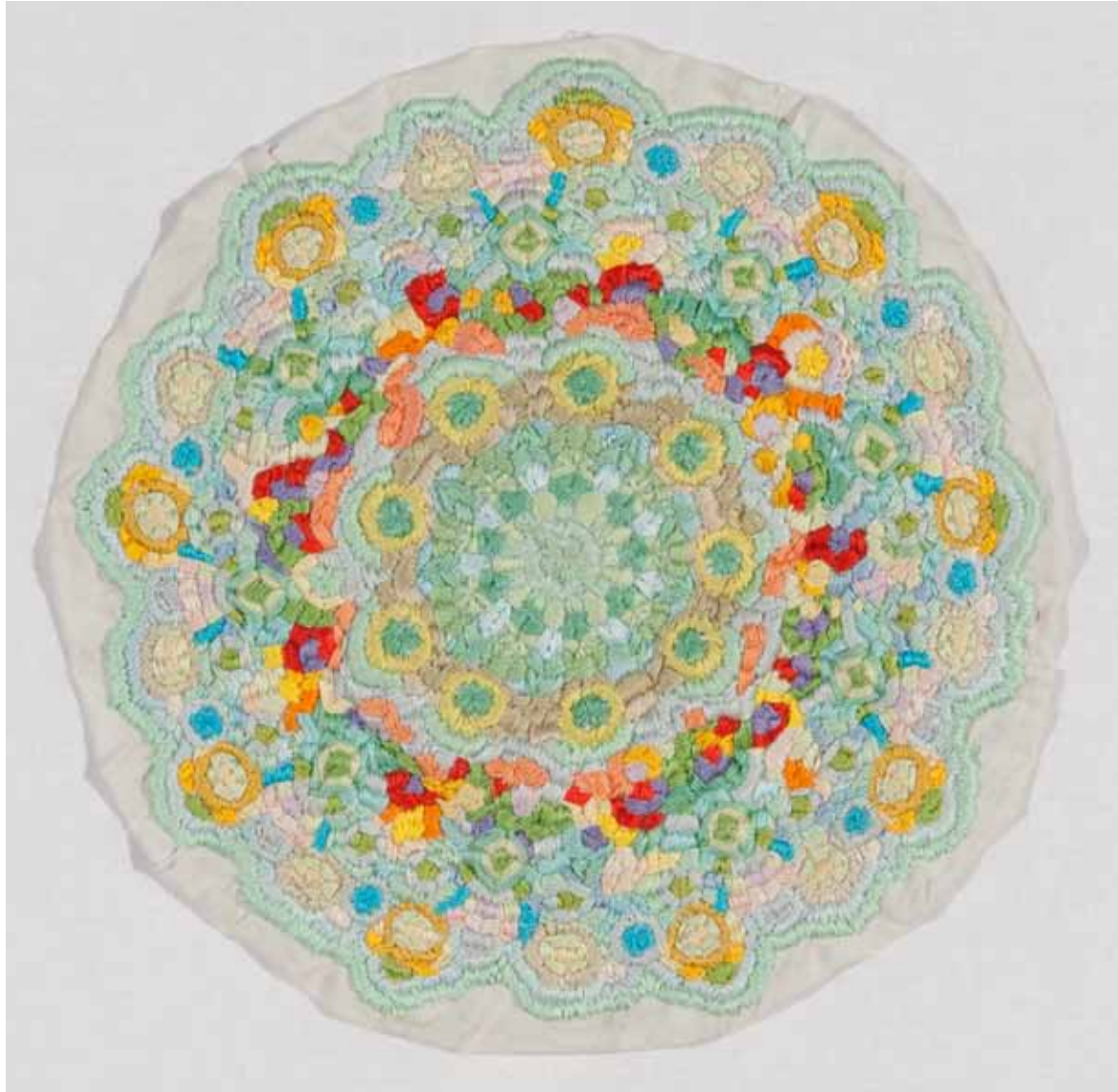




16 Jace Traz Bonerland #2 (2011) pen on paper - 30" x 22.5"

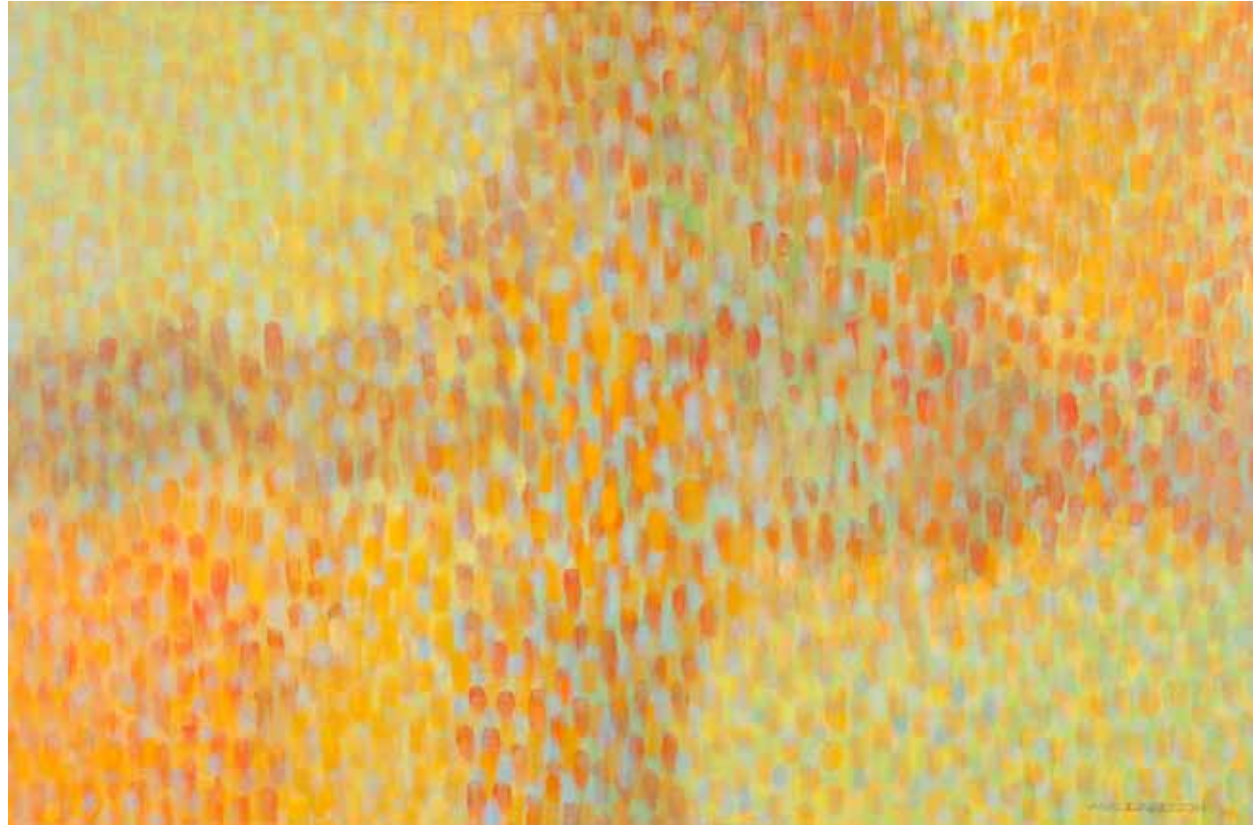


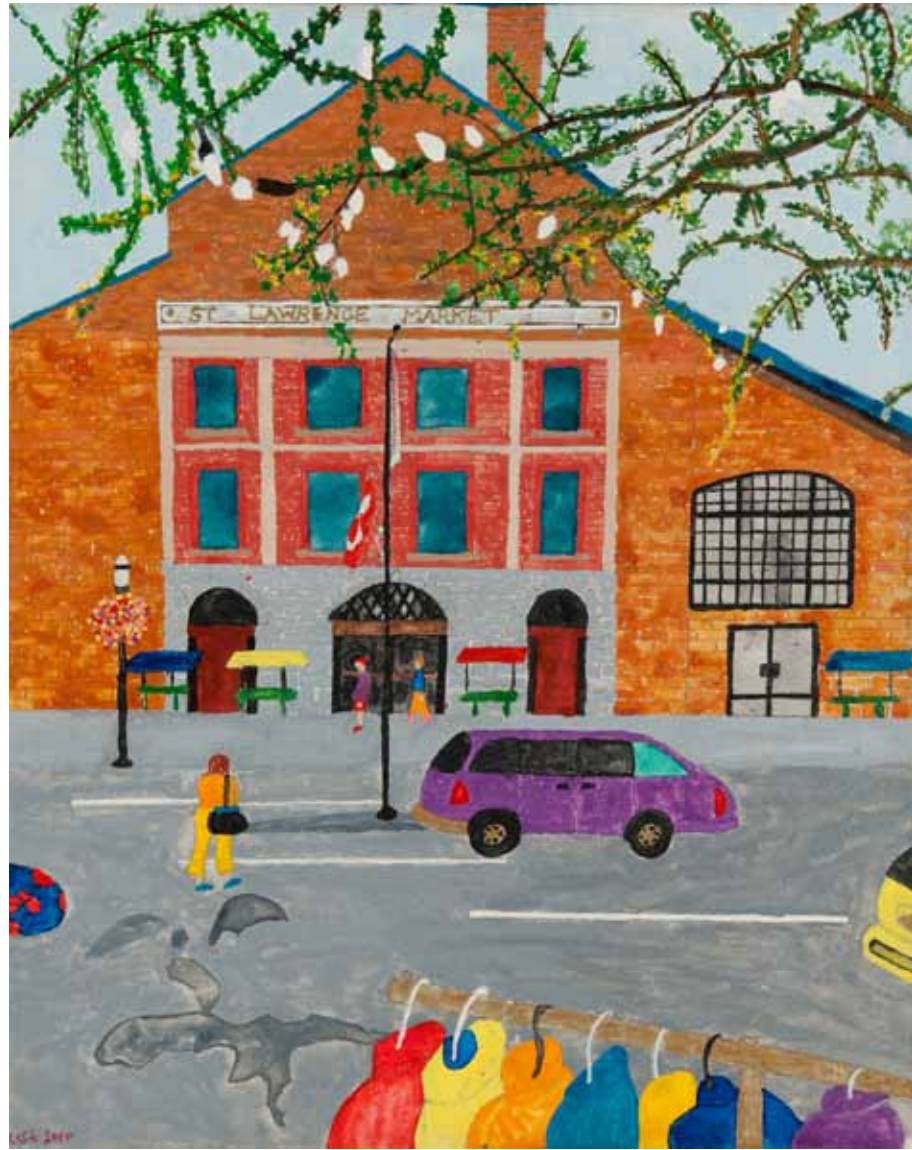
STEVEN CHARNEY Embroidery (2011) embroidery - 14" x 14"









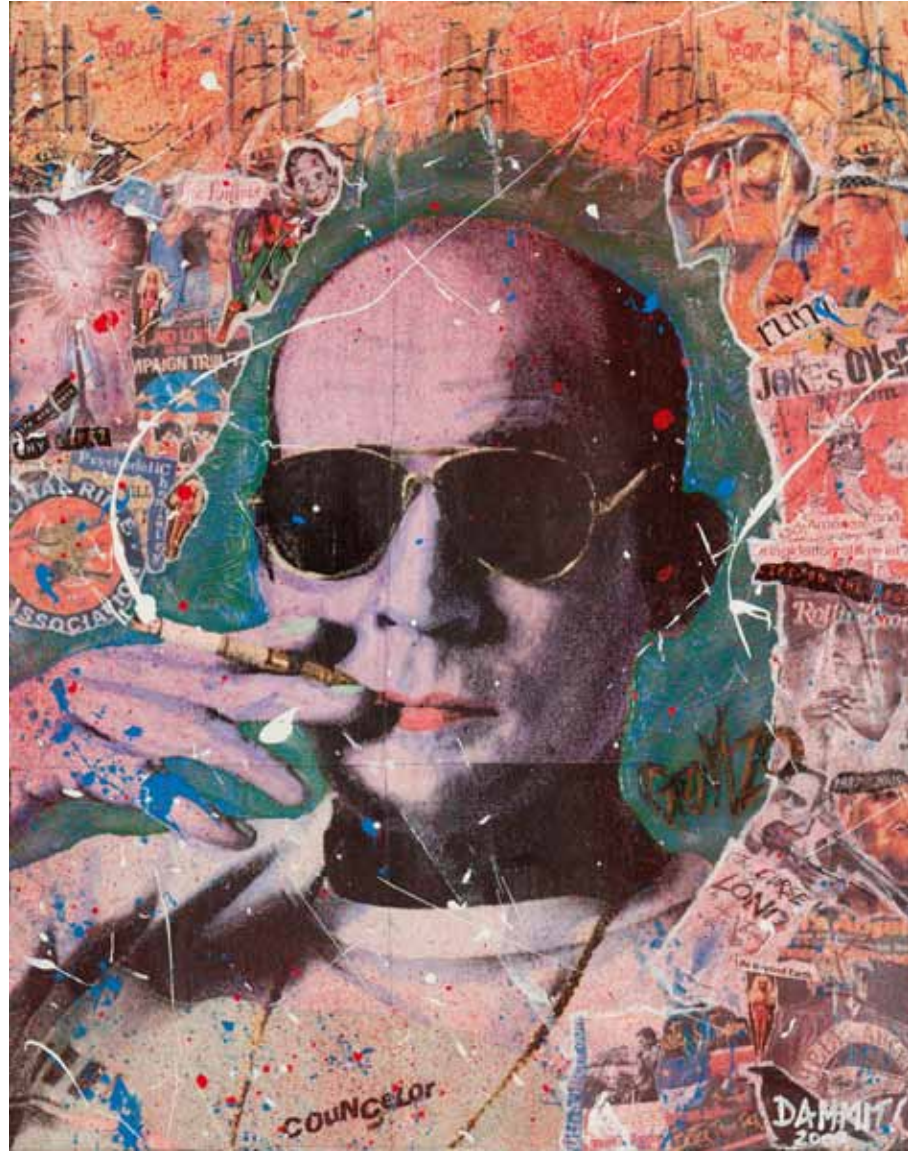




28 JOEY DAMMIT! Look Honey, They're Doing the Watusi (2009) mixed media - 20" x 26



JAI WAX Taking a Break from Danger (2008) oil on canvas - 36" x 24"



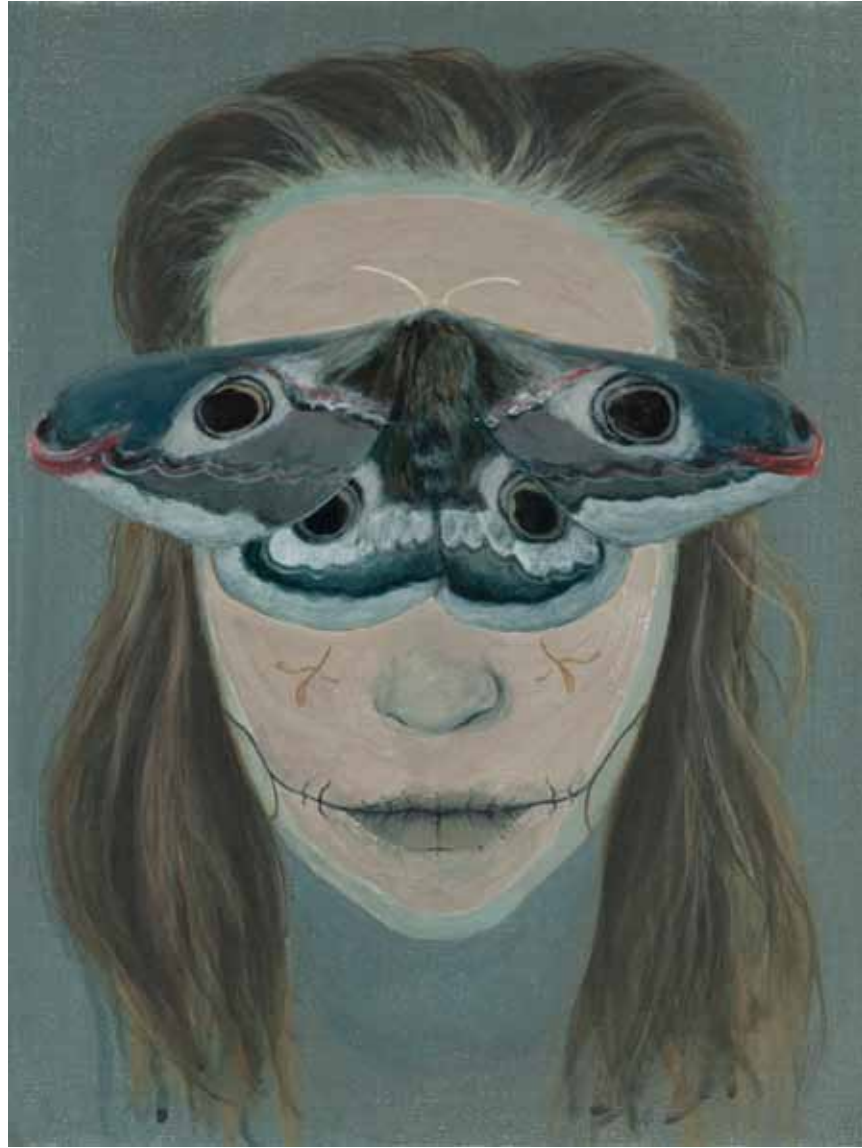
30 JOEY DAMMIT! Dr Hunter S. Thompson: Gonzocide (2009) mixed media - 16" x 20"



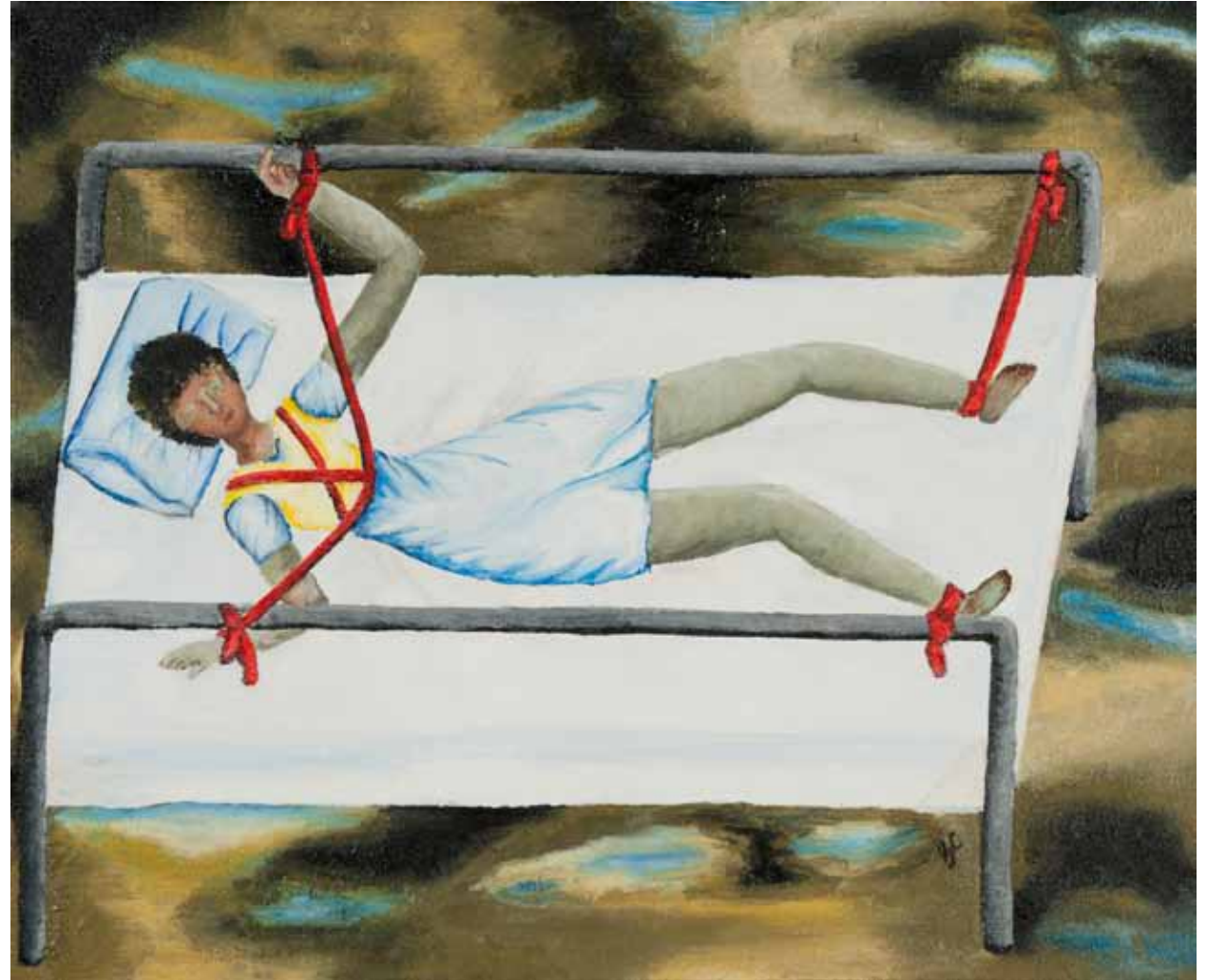
ROBIN JONES Three Figures in Autumn (2011) oil on canvas - 48" x 60"







36 DIANA PORTOKALIDIS Find My Soul and I'm Yours Forever (2012) acrylic - 11" x 14"



GRACE CHERIAN Self-Portrait (2009) acrylic on canvas - 24" x 20"



38 ANNALISE WALMER Sorrow (After Käthe Kollwitz) (2011) monoprint - 9" x 11" Editioned Print 1 of 50



MELISSA BENDER Rapunzel (2011) digital print - 9.5" x 7.5"





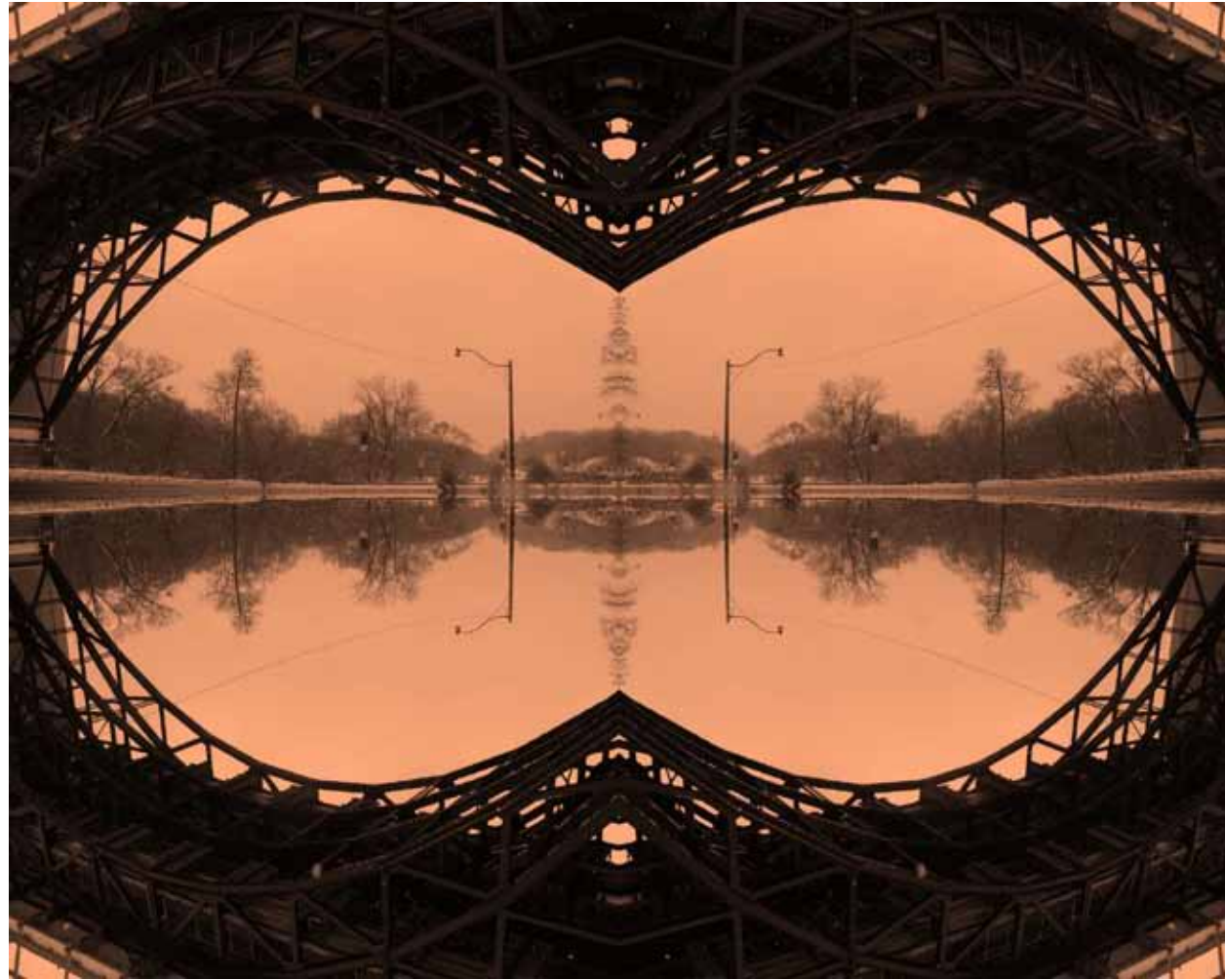
42 AYC Dog (2007) acrylic - 8" x 10"



LAURA LAUGHREN Delerium (2011) acrylic on canvas - 16" x 20"









50 CHRIS SCOTT Persona (3) (2012) watercolour - 25" x 33"



CHRIS SCOTT Persona (1) (2012) watercolour - 25" x 33"



52 CATHERINE JONES Coat (2000) photography - 8.25" x 8"



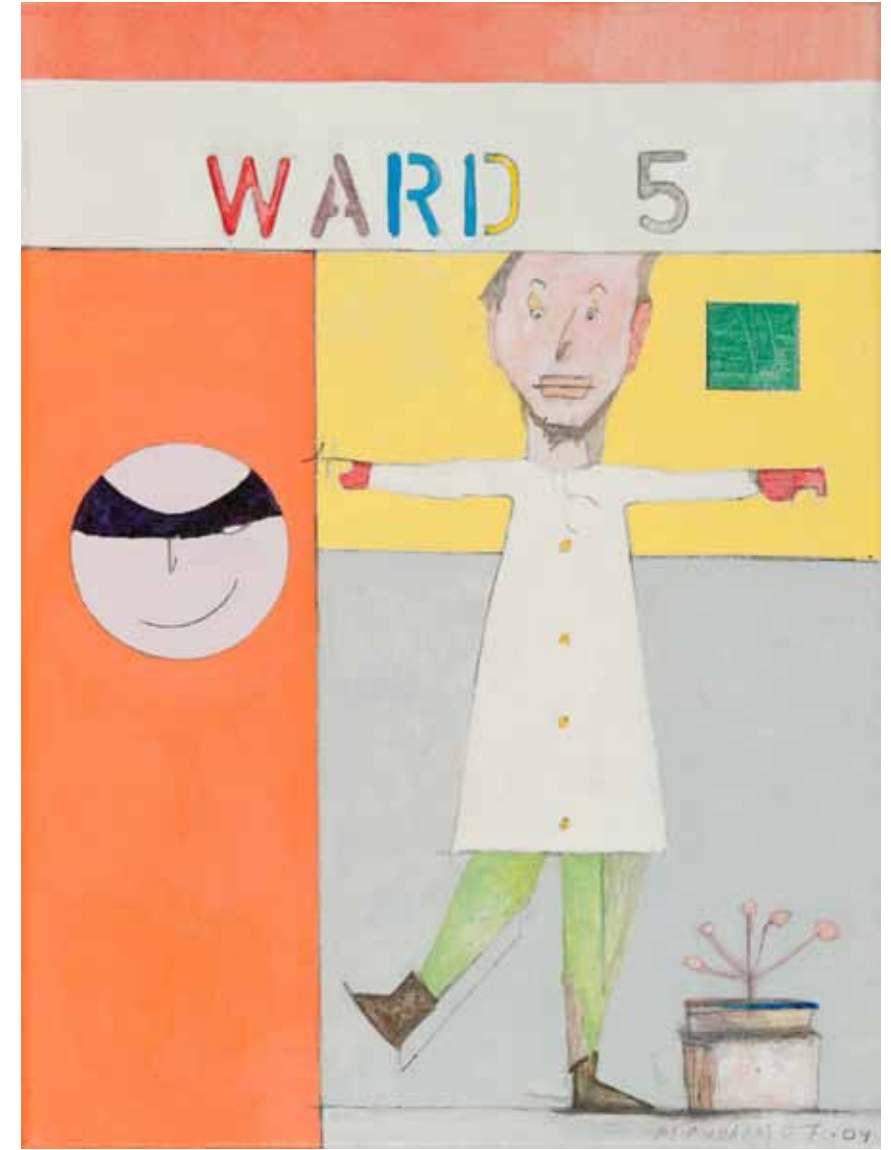
ANGELA BARTELLO Untitled (2011) acrylic on board - 20" x 16"

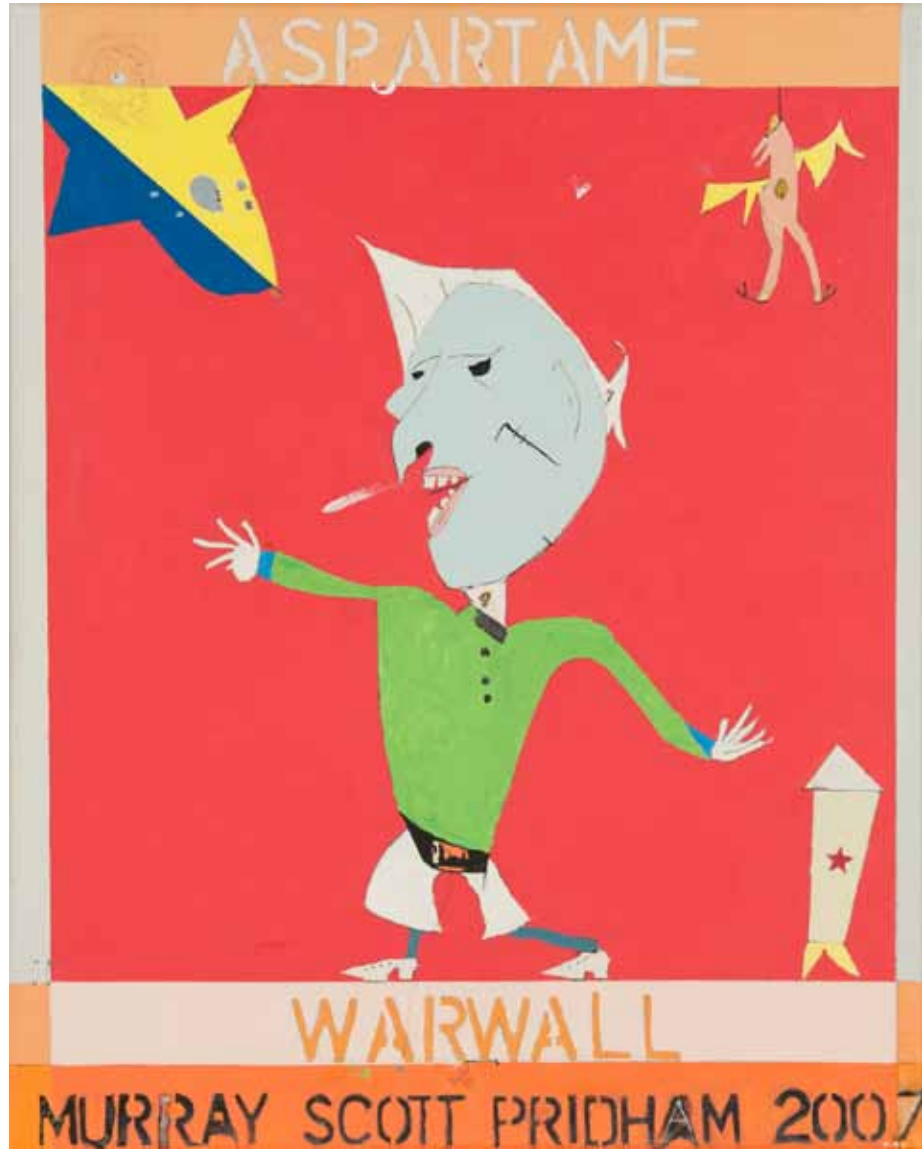


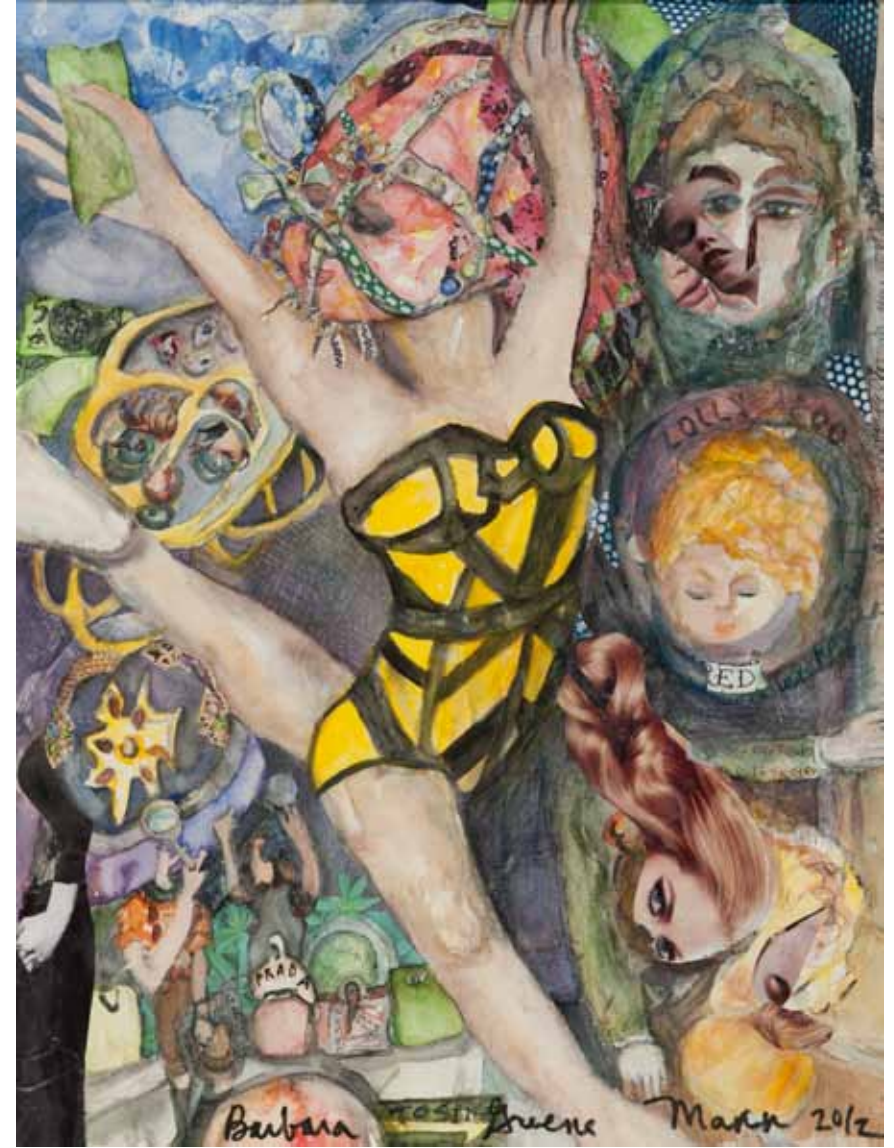
54 HMS SKYCASTLE Owlman and Winged Mouse (2011) acrylic on canvas - 8" x 10"



55 APANAKI The Egungun (2012) mixed media - 24" x 18"









62 Alan Parker Helen (2012) oil on canvas - 20" x 20"



STRanger Punnett (2010) acrylic on canvas - 16" x 12"





Workman Arts Project of Ontario (WA) is pleased to be celebrating 25 years as a unique multidisciplinary arts organization focusing on artists living with mental illness and/or addiction issues. Founded in 1987 by Executive/Artistic Director Lisa Brown, WA seeks to empower its artist members through training, performances, exhibits and through partnering with other arts organizations.

WA began as a theatre company with eight members and now boasts 250 artists training and working in theatre, music, literary arts, visual arts and film. Members have access to the best artist-trainers in Ontario, offering courses and workshops in areas such as poetry (bill bissett), theatre (Edward Roy), film (Chris Landreth), opera (Kyra Millan) and visual arts (Erin Finlay). Serving artists at all career stages, programs help members fulfill their creative potential, either by focusing on their artistic development, health or personal fulfillment. WA allows members the opportunity to engage in meaningful activities which build on their strengths rather than focusing on their illnesses.

WA activities impact not only member artists, but audiences worldwide through diverse artistic programming, including 19 editions of the Rendezvous with Madness Film Festival, 11 annual Being Scene visual arts exhibitions, the production of 20 original plays, and the founding edition of the international Madness and the Arts World Festival. WA's impact is important for all audiences, but most especially for youth. Rendezvous in the Classroom is a unique program offering films suited to children and youth, accompanied by discussions with artist filmmakers and mental health workers.

As an international leader in the field of mental illness and the arts, WA has a strong commitment to research, particularly with the University of Toronto, to document and share the impacts of its activities. Among the research projects underway are studies of the efficacy of the Rendezvous in the Classroom program and an ongoing assessment of member artists and the impact of WA programming on their quality of life.

*True expression comes out of faith. At Workman Arts this is proven every time someone puts pen to paper, to write a play, draw a picture, compose a piece of music, take a workshop, to be themselves. All these activities are brought to a larger public in the form of art exhibitions, a film festival, the staging of plays; music; and writing. And yes there is a certain air of healthy competition, people trying to do the best they can. More surprising is to see an individual whose illness is plain to see. Yet look at their art and you will be astonished; how can this be? Over 250 people are Members at Workman Arts. We form a community of exchange, and understanding, where spirit, expression and diversity manifests, and many times small miracles do happen.*

– Peter Smith, Visual Artist, Workman Arts Member (1959-2009)

The Workman Arts Project of Ontario (Workman Arts), established in 1987, was founded on the principle that the creative process is integral to the quest for personal and spiritual development. Workman Arts is a not-for-profit professional arts company in partnership with the Centre for Addiction and Mental Health (CAMH).



Workman Arts is a member-based organization with over 250 active members. Any individual who lives with and receives, or has received services for mental health or addiction issues, in the Greater Toronto Area and is interested in developing their artistic talents, is eligible to become a member and access Workman Arts programs and services free of charge.

Members arrive at Workman Arts with a variety of levels of artistic interest, skill, and talent. Some come to Workman Arts with extensive arts backgrounds, while others are entering the art world for the first time. Workman Arts' goal is to meet the needs of members at both ends of the spectrum, as well as everyone in between.

If you are interested in becoming a member of Workman Arts, and for further information about membership please contact our Membership and Training Manager, Danica Brown, at [danica\\_brown@workmanarts.com](mailto:danica_brown@workmanarts.com) or 416.583.4339.

Training has been an integral part of Workman Arts' work since the company's inception in 1988. Workman Arts offers high calibre training in Film, Literary Arts, Music, Theatre, and Visual Arts delivered by artists and working arts professionals. Workman Arts uses an innovative, non-service delivery model, which allows member consumers/survivors the opportunity to engage in meaningful activities that build on their strengths rather than focus on their illnesses. The model also allows members to participate in decision-making and assume leadership roles, to gain training to enhance their business skills and work with professional artists. Workman Arts recognizes that its members represent a variety of levels of artistic interest, skill, and talent. Four training streams enable Workman Arts to program according to member needs.

For 25 years Workman Arts members have benefited from exceptional programming unlike anything offered elsewhere. Workman audiences have enjoyed thought-provoking artistic productions that entertain, educate, and challenge their perceptions about mental illness and addiction. This combination, which is so singularly Workman Arts, would not be possible without the generous support of donors. Whether you are an individual or represent a corporation or a foundation, we invite you to get involved today.

For more information or to make a donation please contact 416.583.4339 or visit our website at [www.workmanarts.com](http://www.workmanarts.com)

As a charitable organization, Workman Arts can issue tax receipts for the full amount of your donation.



ARTIST	TITLE OF WORK	PAGE
Claudette Abrams	Duality	49
Apanaki	The Egungun	55
AYC	Dog	42
Angela Bartello	Untitled	53
Mark Belvedere	Restoration	46
Melissa Bender	Rapunzel	39
Danae Chambers	Woman in Chair	64
Steven Charney	Embroidery	17
Steven Charney	Embroidery	18
Grace Cherian	Self-Portrait	37
Joey DAMMIT!	Look Honey, They're Doing the Watusi	28
Joey DAMMIT!	Dr Hunter S. Thompson: Gonzocide	30
Ann Davidson	Jinny's Leaf	24
Lisa Faiz	St Lawrence Market	26
Lisa Faiz	Church of the Holy Saint	27
Vija Francis-Celmins	Tip of Smith Bay (Dollars Lake, Ont)	12
Barbara Greene Mann	An Angel Lived in My Hometown, Oak Park	56
Barbara Greene Mann	Faux Map Zoologic	60
Barbara Greene Mann	Glamour (from the Purse Head Series)	61
HMS Skycastle	Owlman and Winged Mouse	54
Catherine Jones	Coat	52
Robin Jones	Three Figures in Autumn	31
Robin Jones	Woman and the Machines of Fusion Energy	65
Laura Laughren	Delerium	43
Utter Logic	Utterance of Addiction	14
Elysa Martinez	At Half Moon Bay	19
Michael Mills	Night Tree (Diptych)	13
Michael Morbach	Still Life No 3	22
Michael Morbach	Still Life No 2	23

ARTIST	TITLE OF WORK	PAGE
Peter Mulcair	Feeling Alienated	44
Peter Mulcair	Everywhere a Sign	45
Alan Parker	After the Storm	32
Alan Parker	The Beach	33
Alan Parker	Helen	62
Diana Portokalidis	Kiddie Grinder	35
Diana Portokalidis	Find My Soul and I'm Yours Forever	36
Murray Pridham	Ward 5	57
Murray Pridham	Warwall	58
Murray Pridham	Fun	59
Chris Scott	Majestic Industry	34
Chris Scott	Persona (3)	50
Chris Scott	Persona (1)	51
Annette Seip	Organic	40
Annette Seip	Life's Journey	41
Susan Spagnuolo	Psycho Diagnostic Study #1	47
Susan Spagnuolo	Psycho Diagnostic Study #2	48
STRanger	Punnett	63
Jace Traz	Bonerland #2	16
Annalise Walmer	Sorrow (After Käthe Kollwitz)	38
Lisa Walter	Winter Bird	10
Lisa Walter	The Painted Bird	11
Jane Watson	Reawakening (from the Boundaries Series)	15
Jai Wax	I Am Not What I Think I Am	25
Jai Wax	Taking a Break from Danger	29
Will	Recipere	21
TK Workman	Still Life Turpentine	20

Exhibition Producer	Lisa Brown – WA Founder and Executive/Artistic Director
Exhibition Director	Chris Mitchell – WA Visual Arts Manager
Jurors	Jamie Angell Lisa Walter Christina Zeidler
Installation	Chris Mitchell Lisa Walter
Photography	David Sweeney
Graphic Design	Gust Creative
Printing	Digital Edge Print and Media Services
Framing	Adina Photo and Framing
Caterers	Hart House and Gladstone Hotel
Thank You	To all of the artists who submitted
Special Thanks	25th WA Anniversary Committee, Jamie Angell, Kaye Beeston, Cindy Doust, Andrew Glenn, Sara Goldbine, Joan Parker, Susan Pigott, Robin Rowe, James Roach, Bob Shea and Digital Edge Print and Media Services, Joanne Smale and Planet 3 Communications, Lisa Walter, Catherine Zahn and Christina Zeidler
Honorary Patrons	Dr Barbara Dorian and Dr Paul Garfinkel
Workman Arts Board of Directors	Danny Cushing – Chair, Kate Dewhirst - Vice Chair, Kaye Beeston, Mark Belvedere, Lisa Brown, Richard Caballero, Miles Cohen, Henry Perren, Susan Pigott, Nanette S. Sanson, Keri Shaeffer, Bob Swan
25th Anniversary Committee	Kaye Beeston, Bob Swan, Lisa Brown, Miles Cohen, Dianne MacFarlane, Susan Pigott, Nanette S. Sanson

WA Founder and Executive/Artistic Director	Lisa Brown
Managing Director	Mike Twamley
Membership and Training Manager	Danica Brown
Media Arts Manager	Matthew Hogue
Visual Arts Manager	Chris Mitchell
Technical Director	David Sweeney
Administration, Membership and Training Assistant	Kari Pederson
Poet in Residence	bill bissett
Musician in Residence	Heinz Klein
Visual Artist in Residence	Lisa Walter

Professional Services

Financial Management	Lascelle Wingate
Management Services	
Public Relations	Planet 3 Communications
	Joanne Smale, Tristan Torralba and Terra Longacre



Workman Arts online art rental and sales gallery strives to promote member artists through the sale, rental and exhibition of their work to public and private sector clients. The program's inventory includes works by a wide variety of artists – emerging and established – in a wide variety of mediums and sizes - suitable for display in an office environment. Affordable rental fees are based on a percentage of the sales prices, beginning at \$15 per month for rentals. Works are available for purchase starting at around \$100. 100% of rental and sale fees directly support individual participating artists.

#### LIVEN UP YOUR WORKPLACE

Original artworks provide a sophisticated finishing touch for workplaces. Renting art allows our corporate clients to enhance their offices with the work of some of Toronto's finest emerging artists.

#### TRY BEFORE YOU BUY

We want you to be certain you love the artwork you select. Renting from Workman Arts lets you live with artwork before making the commitment to purchase it. Although you can rent any work of art for as many six-to-twelve month rental terms as you like, at the end of each rental term you have the option to buy the work. Workman Arts will apply up to six months of the rental fees paid toward the purchase price.

#### CREATE NEW VIEWS

Who doesn't need a change of scenery now and then? Renting art lets you change the look of your workspace or office very easily.

To inquire about renting or purchasing work visit <http://www.workmanarts.com/index.php/art-rental-and-sales/> or contact:

Chris Mitchell  
Visual Arts Manager  
416.583.4339 Ext 3  
[Chris\\_Mitchell@workmanarts.com](mailto:Chris_Mitchell@workmanarts.com)

