

A CAMH ART EXHIBIT

Being
Scene



Art is communication.

Art is joy.

Art is therapy.

Art is pain.

Art is social commentary.

Art is fun.

Art is expression.

Art is serious.

Art comes from the heart.

There are many ways to describe art, but sometimes art is indescribable. When words won't suffice, art often challenges us to look inside ourselves and to tap into our emotions.

At the Centre for Addiction and Mental Health, we have a strong belief that the creative process can have a healing effect, by leading people to recover strengths and a revitalized sense of self. In the past two years, we have made efforts to share the results of this belief, by hosting the art exhibits Images 2000, and Foresight/Four Site.

I'm delighted to introduce Being Scene, our Centre's third annual art show and the beginnings of a most impressive permanent collection. Being Scene is now spread over three Centre locations and features juried art by over 50 artists whose work includes paintings, commissioned murals, quilts created for International Women's Day Celebrations in 2000, a collaborative millennium project on large canvas and a portrait of Pierre Elliot Trudeau on loan from a private collection. Being Scene will be on display until June 2002.

All Being Scene artists have been, or currently are, clients at the Centre. All have been paid an artists' fee for the works selected. Most pieces will be available for sale during the run of the show.

The Centre for Addiction and Mental Health is committed to supporting health and well-being and heartily supports the featured artists, as we share in celebrating their accomplishments.

Learn more about these impressive works of art and their creators. Find out how you can purchase one of the pieces so you may enjoy it indefinitely and support the career of a new or an established artist. Witness the power of the creative process.

Most of all — enjoy the show!

Paul E. Garfinkel, MD FRCP (C)



Michael Alzamora
Beautiful Bulbs/Hysterical Faces
36 x 48 inches
acrylic on canvas



Robin Dougall
Serenity
13 inches (in diameter)
hand painted ceramic



Robin Dougall
Country Highlights
13 inches (in diameter)
hand painted ceramic



William Argiropoulos
Newfoundland Scene
12.5 inches (in diameter)
hand painted ceramic



Angela Y. Ching
A Bee in a Flower Garden
10.5 inches (in diameter)
hand painted ceramic



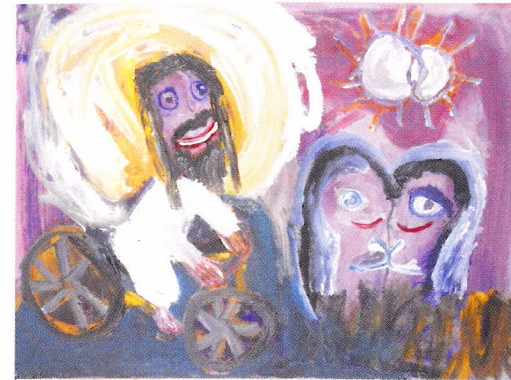
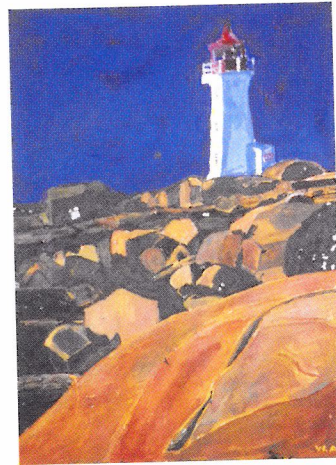
TOP LEFT
Halina Gladkowski
Our Secret Place
12 x 11 inches
transparent watercolour



TOP RIGHT
William Argiropulos
Lighthouse
8.5 x 11.5 inches
gouache

BOTTOM LEFT
Bradley A. Hitchcock
Town in New Brunswick
12 x 9 inches
watercolour

BOTTOM RIGHT
Tara Kym Workman
Kensington Market Story
8 x 11 inches
watercolour



Donna Husiak
The Joy of Cycling
24 x 18 inches
acrylic on canvas



Alan Parker
The Measure of the Real
40 x 30 inches
oil on canvas

Danae Chambers
 Pierre Trudeau
 24 x 26 inches
 oil on canvas



Danae Chambers, a graduate of the University of British Columbia, the Ruskin School of Drawing and of Fine Arts in Oxford, England and the Art Students' League in New York City, has had her work displayed in numerous galleries in Canada and the States. Her work, which includes a variety of landscapes, figure paintings and portraits, is part of many private and public collections. Among her many private commissions are the following portraits: Hon. Flora MacDonald; Mr. James J. Macdonell, former Auditor General of Canada; renowned actress Jane Mallet; and Dr. James Bateman, Founder and Surgeon in Chief of the Orthopedic and Arthritic Hospital in Toronto.

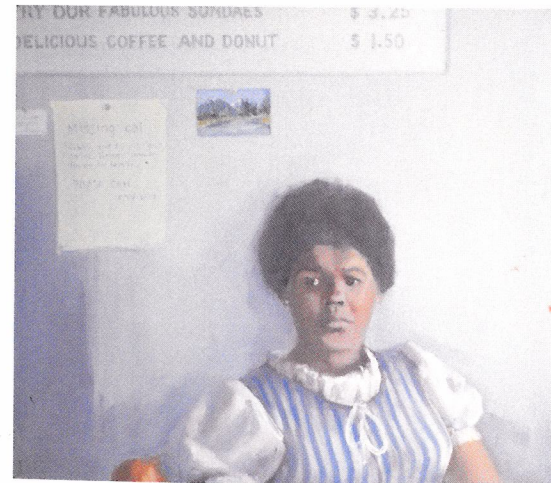
The portrait of Rt. Hon. Pierre Elliott Trudeau, Prime Minister of Canada, is on loan from the collection of Mr. James Coutts.



TOP LEFT
Danae Chambers
 Son of Linda Sorensen
 30 x 36 inches
 acrylic on canvas

TOP RIGHT
Tova McMillan
 Heartbeat
 16 x 20 inches
 acrylic on canvas

BOTTOM LEFT
Danae Chambers
 Model in New York
 32.5 x 28.25 inches
 oil on canvas





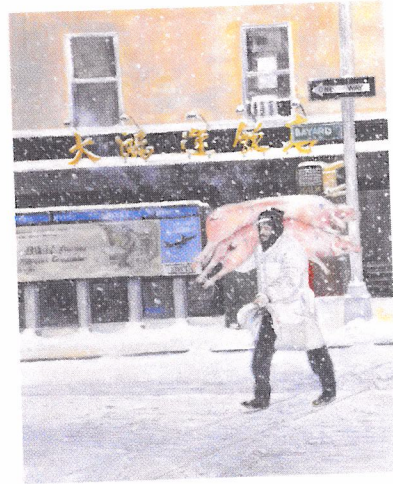
Paul Zingone
Loving Memories
48 x 48 inches
acrylic on canvas



TOP
Amy Davis
Storm Warning
24 x 18 inches
acrylic on canvas



BOTTOM
Julia Choi
Untitled
20 x 16 inches
acrylic on canvas



Henry Benvenuti
Chinatown NYC
16 x 20 inches
oil on canvas



Paul Zingone
The Hitchhikers
48 x 48 inches
acrylic on canvas

Permanent Collection

The Centre for Addiction and Mental Health's founding partners had individual traditions of acquiring many fine works of art through gifts, commissions, and purchases. We have recently begun to take stock of these acquisitions, and to formally document these works. The pieces featured on the yellow background in this catalogue are the first to be officially recognized as part of the Centre's permanent collection. Formalizing our collection will help us to ensure that the art itself and the traditions that brought this art to the Centre are acknowledged as a vital part of our organization's culture and history.



Paul Zingone
Stand Tall
96 x 84 inches
acrylic on canvas

Murals in the Mall

Four artists from the Centre for Addiction and Mental Health were commissioned through the Workman Theatre Project to each paint a 8 x 7 foot mural for the Queen Street Site's Community Centre. Halina Gladkowski, Paula Gurney, Pavel Janacek and Paul Zingone painted four very special works of art that can't help but inspire us as they take us well past the walls upon which they hang.



Pavel Janacek
The Olympians
96 x 84 inches
oil on canvas



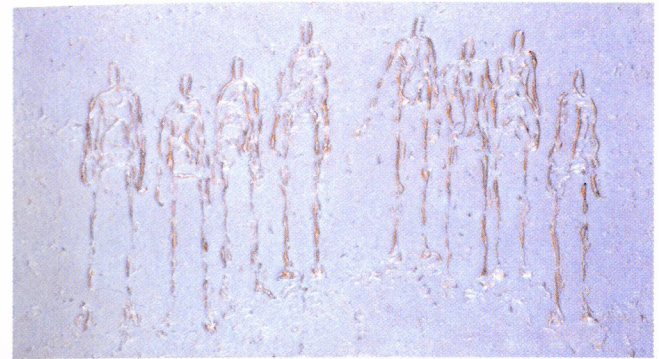
Paula Gurney
FantaSea
96 x 84 inches
acrylic on canvas



Halina Gladkowski
Nature Our Joy and Refuge
96 x 84 inches
acrylic on canvas



Janet Polimeni
Vision Impaired
4.5 x 6.25 and 5.5 x 7.5 inches
papier mâché



Jan Swinburne
Tribes
18 x 10 inches
acrylic on canvas



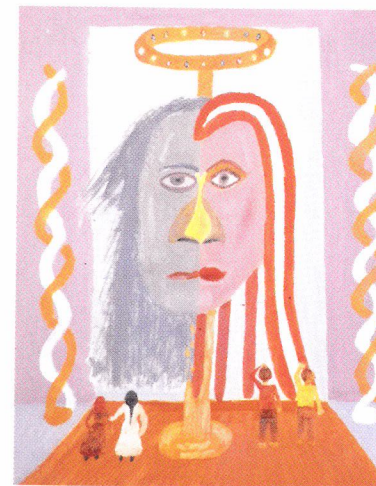
Darren Jones
Buddha Garden
25 x 19 inches
mixed media



Jai S. Wax
Eye of the Void
36 x 24 inches
acrylic on canvas



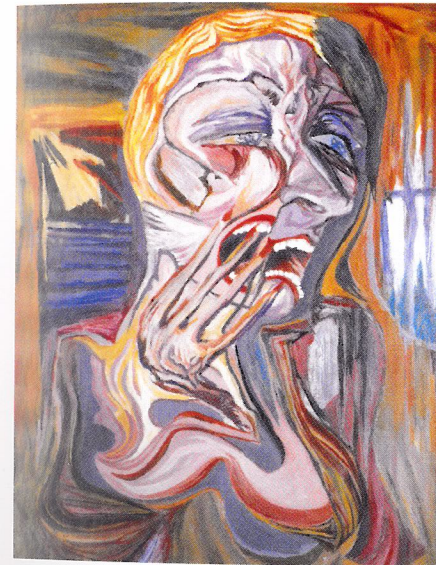
Henry Benvenuti
Seated Woman
18 x 24 inches
collage on board



Jai S. Wax
Love
14 x 18 inches
oil on canvas



Naomi Hendrickje Laufer
Mesmerized
17 x 24.5 inches
charcoal and chalk



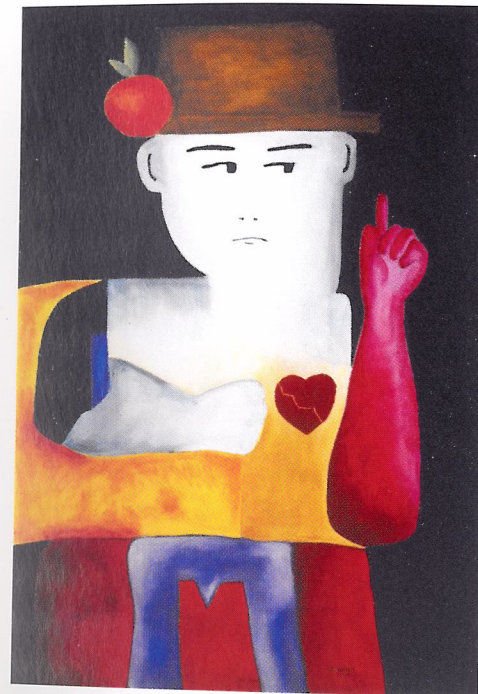
Chris Hogue
Meet Your Ego
18 x 27 inches
acrylic on canvas



Chris Hogue
Portrait of a Man
15.5 x 20 inches
oil on canvas



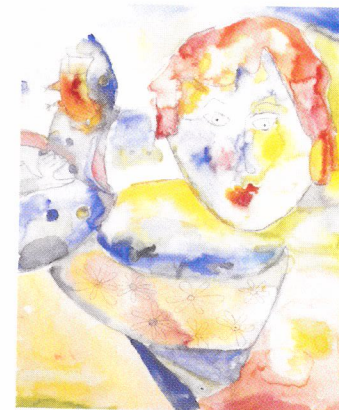
Alan Parker
Players
40 x 40 inches
oil on canvas



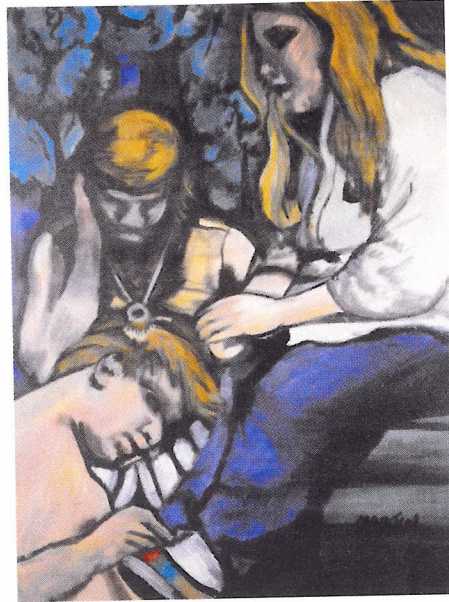
ABOVE
Eduardo Hatch
Broken Heart
24 x 36 inches
oil on canvas



TOP RIGHT
Julio Estany
The Canadian Peacekeeper
12 x 16 inches
acrylic on canvas



BOTTOM RIGHT
Lorri McIntyre
Confusion
15 x 17 inches
watercolour



Kimberly Martin
Day in the Park
24 x 36 inches
acrylic on canvas



Kimberly Martin
Citylights
36 x 24 inches
acrylic on canvas



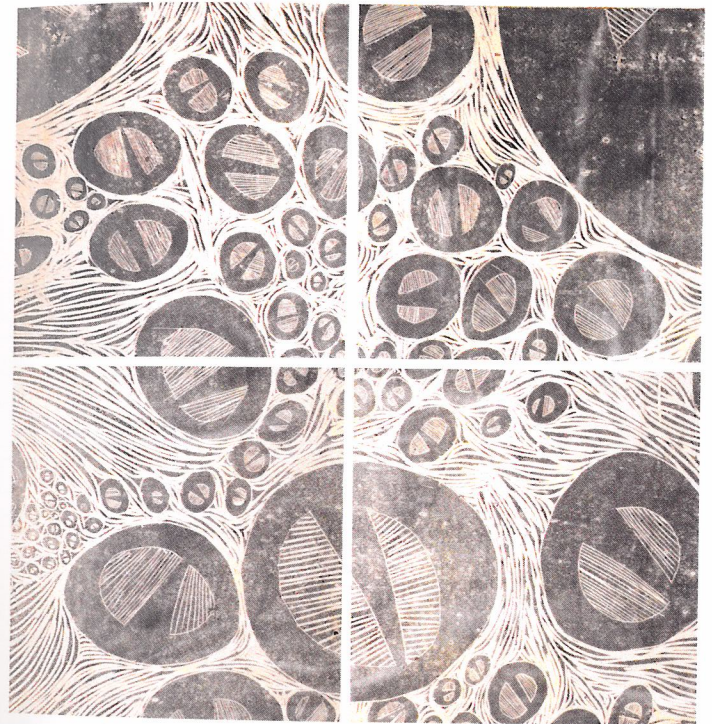
Robin Hammond
Study of Monet
19 x 13.25 inches
acrylic on paper



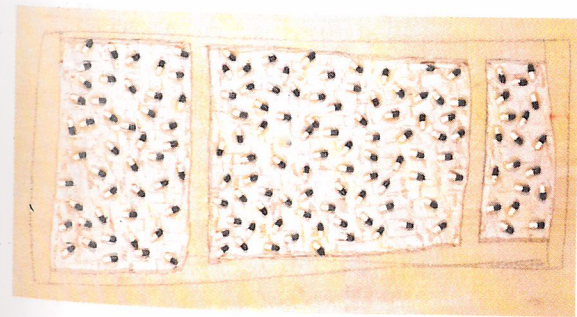
Pascale Reboul
Untitled
12 x 16 inches
watercolour



Kent Simard
Sailing in the Tropics
15 x 11 inches
acrylic on paper



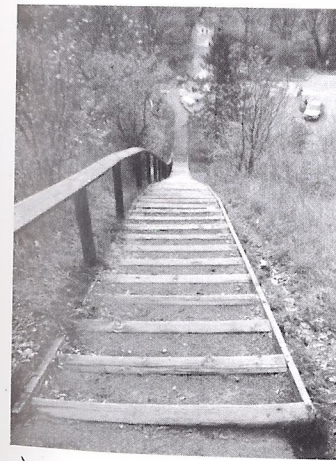
ABOVE
Stephen Julien
Lost in the Cycle
36 x 36 inches
paper and print on lanolin



LEFT
Peter Smith
The Big Pill
21 x 12 inches
basswood relief



Norman Fuchs
Mountain Memories
60 x 16 inches
acrylic on canvas

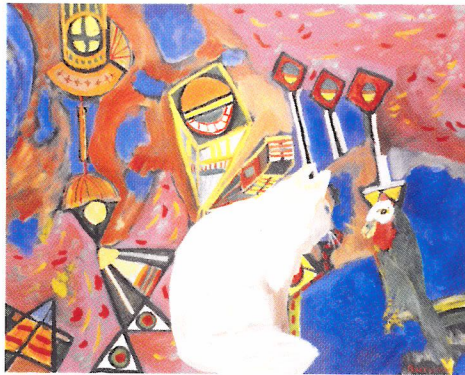


TOP LEFT
Peter Mulcair
Cool Rain
11 x 14 inches
photograph

BOTTOM LEFT
Hugh Gillon
Stairs
10 x 14 inches
photograph

TOP RIGHT
Hugh Gillon
Barbeque Jaws
11 x 14 inches
photograph

BOTTOM RIGHT
Rishi Vasudeva
Sunday Afternoon
14.25 x 12 inches
photograph



Barry Woo
Untitled
30 x 24 inches
oil on canvas



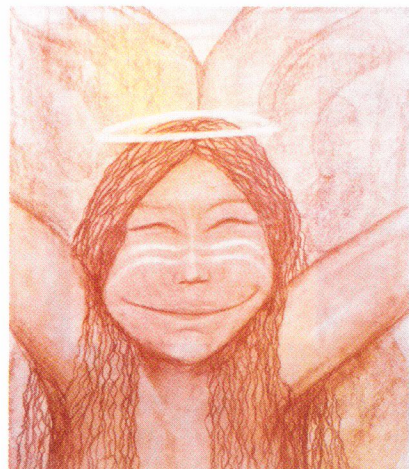
Ron Hyatt
Sun Turtle
42 x 42 inches
acrylic on canvas



Jan Swinburne
Adagio
16 x 12 inches
acrylic on masonite



Douglas Russell Wapp
Fruit of the Loom
18 x 24 inches
conte and india ink



Denise Parent
Thankyou
14 x 16 inches
pastel



Neil Watson
Two Horse Heads
13.75 x 18 inches
house paint and spray paint



TOP LEFT
Karen Horn
Repast
7.75 x 9.5 inches
watercolour



TOP RIGHT
Rose Gordon
Composition of Line
3.5 x 3.5 inches
photograph



LEFT
Halina Gladkowski
Meditation of a Forest Mouse
9.5 x 12 inches
pastel

Susan Schellenberg
The Pinto and The Nun
44 x 36 inches
oil on masonite



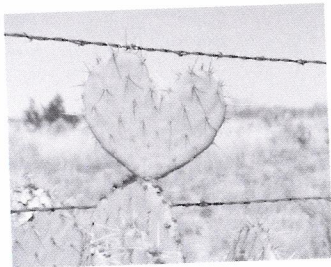
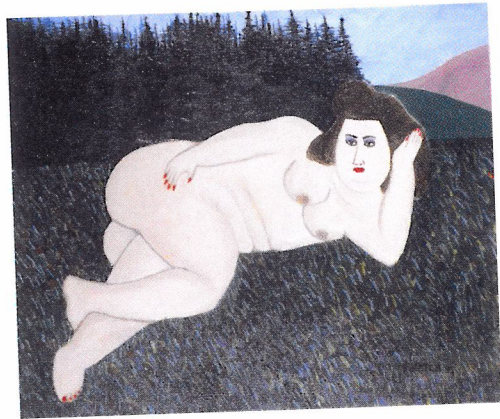
The Pinto and The Nun is one in a series of dream paintings by Susan Schellenberg known as the Shedding Skins Collection that was funded by Cara Operations and installed at the Centre for Addiction and Mental Health, Clarke site in 1998. Ms. Schellenberg's early career as a public health nurse stimulated her interest in socially engaged forms of art making. She is an artist, a playwright, and a mother of five.

"The Holistic collaboration of business, psychiatry and art that allowed the Shedding Skins Exhibit to become a presence at the Centre for Addiction and Mental Health expanded the meaning of my art, by celebrating the importance of story in mental illness situations and the potential of artistic expression to create change and improve our quality of life."

- Susan Schellenberg



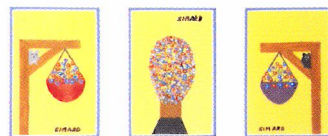
International Women's Day Quilt
60 x 83 inches
fabric



TOP LEFT
Eduardo Hatch
Femme à L'aise
24 x 20 inches
oil on canvas

TOP RIGHT
Mike Pastore
Dangerous Attraction
10 x 8 inches
photograph

LEFT
Karine McDonald
Self Portrait
30 x 20 inches
acrylic on canvas



TOP
Darren Jones
Elephant Mosque
25 x 20 inches
mixed media

MIDDLE
Kent Simard
3 Pots of Flowers
19 x 10 inches
acrylic on paper

BOTTOM
Louise Wiatrowski
Bell Ringers
21 x 23 inches
pen and ink



Donna Husiak
Teach Me To Play
24 x 18 inches
acrylic on canvas



Barry Woo
The Band at the Park
32 x 40 inches
oil on canvas

Being Scene – A CAMH ART EXHIBIT

Exhibit Director
Lisa Brown

Artist Liaison
Cheryl Saracini

Jurors
Brian Hladin, Brenda McCrank, Megan Williams

Photography
John Donaghue

Catalogue Design
Up Inc.

Catalogue Printing
Flash Reproductions Ltd.

Display Cases and Framing
Museum Pro's, Karen Jefferies

Space Coordination
Stephen Julien

Administrative Support
Jonathon Sugerman, Kim Marie Charpentier,
Terry Remple

Opening Day Coordinators
Bettina Cumming, Robyn Cusson

Associate Directors
Susan Beniston, Mary Seeman

Lecture and Workshop Coordinator
Beth Merriam

Art Installation
Susan Beniston, Robert Burns, Stephen Julien

Lighting Design
David Sweeney

Copy Editor
Shannon Sperry

Oversized Display Cases at QS Mall
Ross Clair, Bill McLaughlin, Rudy Amrein

Publicity
Unique views

Corporate Sponsorship
Irvin Epstein

Sponsors
The Centre for Addiction and Mental Health,
AstraZeneca, Eli Lilly, Ross Clair and
Associates, Workman Theatre Project,
Janssen-Ortho Inc

Special Thanks to Jean Simpson, Peter Coleridge and Rudy Amrein

Thanks to all the artists who participated in this year's competition, lecturers Barry Cohen and Anne Mills, the Workman Theatre Project Board of Directors and staff, Eduardo Hatch, Carey George and Janet New of UP Inc., the switchboard and maintenance staff at CAMH, Deborah Etsten, Rong Ting, Anna Schrofer, Vanessa Alexander, Christina Burch, Sue McCluskey, Theresa Conforti, Barry Martell, Steve Derry, Richard Smith, George Floyd, CARO, Ellen Palmer, CARFAC, Visual Arts Ontario

This annual exhibit was founded by Susan Beniston, Lisa Brown and Mary Seeman

Being Scene cover image "Broken Heart" (detail) created by artist Eduardo Hatch



Centre
for Addiction and
Mental Health
Centre de
toxicomanie et
de santé mentale

Workman Theatre Project and The Centre for Addiction and Mental Health
1001 Queen Street West, Toronto, Ontario M6J 1H4
T 416.583.4339