



## Member News

### OFFICE CLOSURE: NOVEMBER 3-7

Hi Members,

We hope you are enjoying our [2025 Rendezvous with Madness Festival!](#)

This is a notification that our **offices and studio spaces** will be **closed** from **Monday, November 3rd** to **Friday, November 7th**.

**Classes will run as scheduled.** Our [Lingering Echoes](#) exhibition will also remain open Thursday to Sunday, 1-6PM.

Our office will re-open Monday, November 10th for regular operating hours (12-5PM).

If you have any questions, please feel free to reach out to us at [info@workmanarts.com](mailto:info@workmanarts.com). If you wish to reach a specific staff member, please see this page to find their contact information.

In the meantime, we invite you to **stream our Rendezvous films!** Select films will be streaming in Ontario only **from Monday, November 3rd to Saturday, November 15th**.

Thank you,  
Workman Arts

# JOIN US FOR THIS YEAR'S *RENDEZVOUS WITH MADNESS FESTIVAL*



## #RWMFEST is well underway!

We still have a lot of exciting programming to partake in for the rest of the weekend!

Using art as the entry point to illuminate and investigate the realities and mythologies surrounding mental illness and addiction, **RENDEZVOUS WITH MADNESS** spotlights the human capacity for endurance in the face of great challenges.

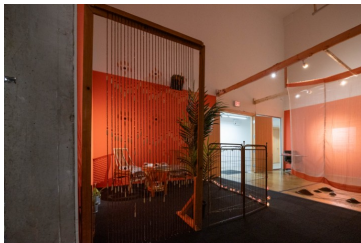
All tickets to screenings and performances are **pay what you wish** at the door starting one hour before the event.

Advance tickets (Free in limited quantity in advance, \$5, \$10, \$15, \$20) are available online with a credit card at [workmanarts.com](http://workmanarts.com).

Suggested donation \$10-15. Special events may feature different pricing.

Our **RENDEZVOUS WITH MADNESS** schedule is NOW LIVE on our website.

Visit [workmanarts.com/rwm/](http://workmanarts.com/rwm/) to check out our other programs and get your tickets.



## Our #RWMFEST Exhibition, *Lingering Echoes*, is NOW OPEN

**OPEN THURSDAYS TO SUNDAYS, 1-6 PM**

***Lingering Echoes*** brings into conversation personal sound-centered artworks by artists **Aliyah Aziz, Ghislan Sutherland-Timm, Middle, Tanya Louise Workman, and Winta Hagos**.

Collectively and individually, the artworks take up themes of resistance, collectivity, embodiment, silence, and resilience.

***Lingering Echoes*** ask where the individual ends and the collective begins within the porosity of space and temporalities.

This exhibition is the result of “Sounding Spaces” course, part of the Train to Present program led by instructor/artist Nicole Marchesseau.

[LEARN MORE](#)

# MEMBER NEWS & OPPORTUNITIES



## IN-PERSON SCREENING | *Poetic Proclamations: Short Films by Workman Arts Members*

Saturday, November 1 | 2-3 PM | Tranzac Club (292 Brunswick Ave, Toronto)

“Poetic Proclamations” features **nine films** exploring a wide palette of creations including documentary, fiction, animation, spoken word and 360-degree cinema.

An all-encompassing range of poetic, personal and transformational expressions that not only disrupt common narratives around mental health they also embody the connections of what it means to connect, critique and commiserate in a mad world.

[GET YOUR TICKETS HERE](#)



Back by popular demand, the 2nd annual [Rhythm of the Night](#) closes out the Rendezvous With Madness festival.

Come be in community as we headbang, dance, groove, vibe, and shop the whole night away. Get your tickets [here](#).



## *Apply for 1:1 Professional Development Mentorships*

Do you need assistance with making an arts grant application? Do you want to understand the submission process and improve your odds of being successful? **Rick Miller** can help you navigate the labyrinthine arts council application process.

Apply here for Grant Application Support:  
<https://form.jotform.com/252307285187259>

This **one-on-one mentorship** is for artists who want to build a clear and authentic brand rooted in their creative identity. It is a collaborative process shaped by your work, your story, and your goals. Together, we will explore what branding means for you as an artist and how to express that across your materials, platforms, and presence.

We will work together to uncover your message, shape your visual and written identity, and build the tools you need to represent yourself with confidence. This includes creating or refining your website, artist statement, portfolio, business cards, and social media presence.

We will shape a digital and real-world identity that feels true to who you are and speaks clearly to the people you want to reach.

Apply here the Branding for Artists:

<https://form.jotform.com/252256099109259>

[\*\*LEARN MORE HERE\*\*](#)



## **Book a Meeting with our Membership Manager, Jenna Reid**

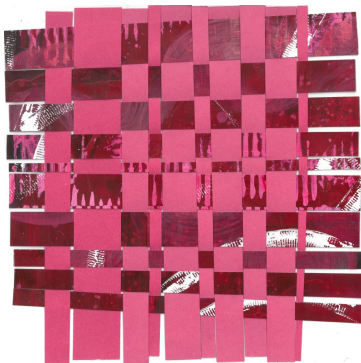
Do you have something you'd like to chat about? Need to have your voice heard? Have stuff regarding your experience at Workman Arts you'd like to discuss?

Or simply like to talk through important things unfolding in your art practice?

Or, perhaps you'd just like to connect and hangout.

[\*\*BOOK A VIRTUAL MEETING\*\*](#)

[\*\*BOOK AN IN-PERSON MEETING\*\*](#)



## **Our 2025 Art Cart Summer Showcase is NOW LIVE**

**Art Cart** is a partnership between Workman Arts and Gifts of Light, which pairs established Workman Arts member artists with CAMH client services to provide peer-to-peer arts instruction with an emphasis on skill development and creative exploration.

Select artworks are available for purchase. Visit [workmanarts.com/art-cart/](https://workmanarts.com/art-cart/) for more.

# camh



Canada Council  
for the Arts    Conseil des arts  
du Canada



ONTARIO ARTS COUNCIL  
CONSEIL DES ARTS DE L'ONTARIO  
an Ontario government agency  
un organisme du gouvernement de l'Ontario



FUNDED BY  
THE CITY OF  
TORONTO



Canadian  
Heritage    Patrimoine  
canadien



©2024 Workman Arts | 1025 Queen Street West, #2400 | Toronto ON  
M6J 1H4



Want to change how you receive these emails?  
You can [unsubscribe](#) or [manage preferences](#).

