



Leslie Ann Smith  
*Tiresias*, 2018  
acrylic on wood panel  
20 x 20"

\$600  
\$15 rental  
site Artist (available)



[workmanarts.com](http://workmanarts.com) (416)583-4339 x 6



Leslie Ann Smith  
*Eve*, 2018  
acrylic on board  
28.5 x 21.5" (framed)

\$660  
\$17 rental  
site Artist (available)



[workmanarts.com](http://workmanarts.com) (416)583-4339 x 6

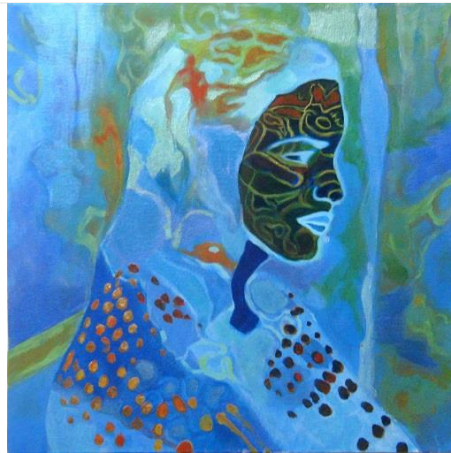


Leslie Ann Smith  
*Lilith*, 2017  
acrylic on canvas  
18 x 24"

\$600  
\$15 rental  
site Artist (available)



[workmanarts.com](http://workmanarts.com) (416)583-4339 x 6



Leslie Ann Smith  
*Ruby*, 2018  
acrylic on canvas  
18 x 18"

\$600  
\$15 rental  
site Artist (available)



[workmanarts.com](http://workmanarts.com) (416)583-4339 x 6



Leslie Ann Smith  
*Blind Seer*, 2017  
acrylic on canvas  
30 x 24"

\$720  
\$18 rental  
site Artist (available)



[workmanarts.com](http://workmanarts.com) (416)583-4339 x 6



Leslie Ann Smith  
*Woman*, 2017  
acrylic on paper  
24 x 18" (framed)

\$600  
\$15 rental  
site Artist (available)



[workmanarts.com](http://workmanarts.com) (416)583-4339 x 6



Leslie Ann  
Smith  
*Dream*, 2018  
acrylic on board  
24 x 18"  
(framed)

\$600  
\$15 rental  
site Artist  
(available)



[workmanarts.com](http://workmanarts.com) (416)583-4339 x 6